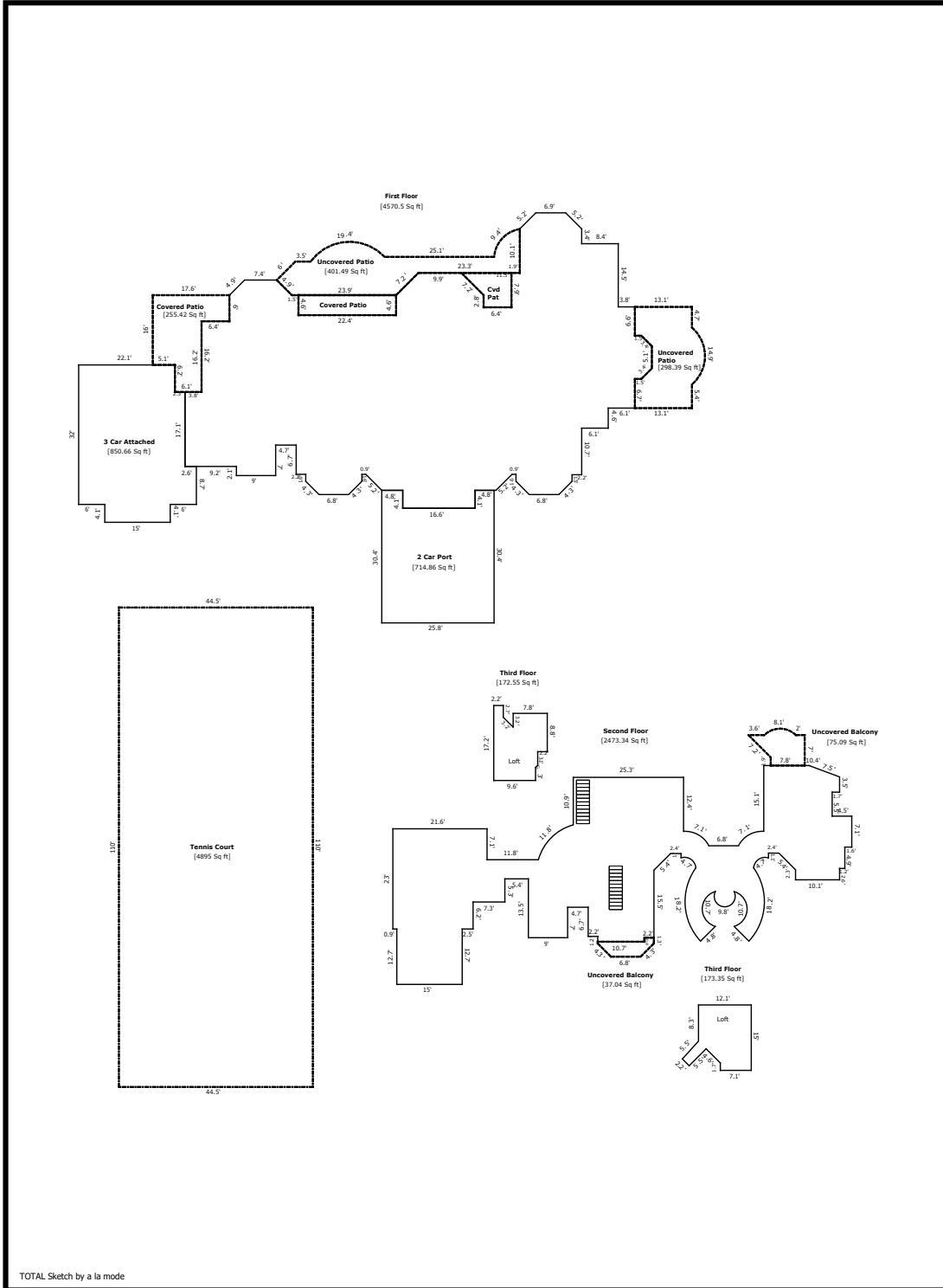


Building Sketch (Page - 1)

Borrower			
Property Address	11 Watertree Dr		
City	The Woodlands	County	Montgomery
		State	TX
Lender/Client		Zip Code	77380

** APPRAISAL MEASUREMENTS: 7,390



Building Sketch (Page - 2)

Borrower				
Property Address	11 Watertree Dr			
City	The Woodlands	County	Montgomery	State TX Zip Code 77380
Lender/Client				

TOTAL Sketch by a la mode

Area Calculations Summary

Living Area	Area	Calculation Details
First Floor	4570.5 Sq ft	$16.6 \times 4.1 = 68.1$ $0.5 \times 3.5 \times 3.5 = 6$ $0.5 \times 3.5 \times 3.5 = 6$ $7.4 \times 3.5 = 25.6$ $0.5 \times 3.7 \times 3.7 = 6.8$ $0.5 \times 3.7 \times 3.7 = 6.8$ $26.2 \times 3.7 = 96.3$ $0.5 \times 3 \times 3 = 4.6$ $0.5 \times 3 \times 3 = 4.6$ $6.8 \times 3 = 20.7$ $0.5 \times 3 \times 3 = 4.6$ $0.5 \times 3 \times 3 = 4.6$ $6.8 \times 3 = 20.7$ $12.9 \times 1.6 = 20.6$ $12.9 \times 1.5 = 19.3$ $9 \times 2.1 = 18.9$ $15.1 \times 0.1 = 1.5$ $65.5 \times 6.7 = 439$ $20.8 \times 4.9 = 101.9$ $91 \times 3.9 = 355$ $97.1 \times 4.6 = 446.7$ $103.2 \times 3.7 = 381.9$ $99.4 \times 3 = 298.2$ $0.5 \times 2.4 \times 2.4 = 2.9$ $100.9 \times 2.4 = 242.6$ $103.3 \times 5.1 = 526.9$ $0.5 \times 2.4 \times 2.4 = 2.9$ $100.9 \times 2.4 = 242.6$ $99.4 \times 3.3 = 327.2$ $93 \times 1.4 = 130.2$ $15.8 \times 4.6 = 72.8$ $54.8 \times 1.8 = 98.6$ $20.1 \times 2.8 = 56.2$ $0.5 \times 5.1 \times 5.1 = 13$ $0.5 \times 5.1 \times 5.1 = 13$ $9.9 \times 5.1 = 50.4$ $28.3 \times 0.1 = 3.1$ $24.5 \times 7.8 = 190.9$ $22.6 \times 6.7 = 151.6$ $14.2 \times 3.4 = 48.3$ $0.5 \times 3.7 \times 3.7 = 6.8$ $0.5 \times 3.7 \times 3.7 = 6.8$ $6.9 \times 3.7 = 25.2$
Second Floor	2473.3 Sq ft	$15 \times 12.7 = 190.5$ $0.5 \times 2.6 \times 7 = 9.1$ $10.4 \times 2.6 = 27$ $17.4 \times 3.5 = 60.9$ $25.3 \times 10.9 = 275.8$ $15.7 \times 5.5 = 86.4$ $20.2 \times 3.5 = 70.7$ $0.5 \times 1.5 \times 1.5 = 1.1$ $25.3 \times 1.5 = 38$ $21.6 \times 7.1 = 153.4$ $0.5 \times 3.3 \times 3.3 = 5.4$ $0.5 \times 3.3 \times 5.8 = 9.6$ $26.8 \times 3.3 = 88.4$ $0.5 \times 5.8 \times 3.3 = 9.6$ $20.2 \times 3.3 = 66.7$ $0.5 \times 0.3 \times 0.3 = 0$ $68.7 \times 0.3 = 20.6$ $0.5 \times 1.4 \times 1.4 = 1$ $67.4 \times 1.4 = 93.1$ $0.5 \times 0.1 \times 0.1 = 0$ $51.3 \times 0.1 = 5.1$ $0.5 \times 1.4 \times 1.4 = 1$ $0.5 \times 1.4 \times 1.4 = 1$ $27.5 \times 1.4 = 39$ $0.5 \times 2.4 \times 2.4 = 2.9$ $59.9 \times 2.4 = 143.8$ $59.9 \times 2 = 119.8$ $25.7 \times 5.3 = 136.2$ $18.4 \times 6.2 = 114.1$ $28.8 \times 6.5 = 187.2$ $9 \times 7 = 63$ $15.1 \times 6.7 = 101.2$ $12.9 \times 0.3 = 3.9$ $10.7 \times 0.9 = 9.6$ $20.1 \times 1 = 20.1$ $0.5 \times 3.4 \times 2.3 = 3.9$ $0.5 \times 2.3 \times 3.4 = 3.9$ $13.3 \times 2.3 = 30.5$

Building Sketch (Page - 3)

Borrower			
Property Address	11 Watertree Dr		
City	The Woodlands	County	Montgomery
		State	TX
		Zip Code	77380
Lender/Client			

TOTAL Sketch by a la mode

Area Calculations Summary

Living Area	Area	Calculation Details
Second Floor	2473.3 Sq ft	$15 \times 12.7 = 190.5$ $0.5 \times 2.6 \times 7 = 9.1$ $10.4 \times 2.6 = 27$ $17.4 \times 3.5 = 60.9$ $25.3 \times 10.9 = 275.8$ $15.7 \times 5.5 = 86.4$ $20.2 \times 3.5 = 70.7$ $0.5 \times 1.5 \times 1.5 = 1.1$ $25.3 \times 1.5 = 38$ $21.6 \times 7.1 = 153.4$ $0.5 \times 3.3 \times 3.3 = 5.4$ $0.5 \times 3.3 \times 5.8 = 9.6$ $26.8 \times 3.3 = 88.4$ $0.5 \times 5.8 \times 3.3 = 9.6$ $20.2 \times 3.3 = 66.7$ $0.5 \times 0.3 \times 0.3 = 0$ $68.7 \times 0.3 = 20.6$ $0.5 \times 1.4 \times 1.4 = 1$ $67.4 \times 1.4 = 93.1$ $0.5 \times 0.1 \times 0.1 = 0$ $51.3 \times 0.1 = 5.1$ $0.5 \times 1.4 \times 1.4 = 1$ $0.5 \times 1.4 \times 1.4 = 1$ $27.5 \times 1.4 = 39$ $0.5 \times 2.4 \times 2.4 = 2.9$ $59.9 \times 2.4 = 143.8$ $59.9 \times 2 = 119.8$ $25.7 \times 5.3 = 136.2$ $18.4 \times 6.2 = 114.1$ $28.8 \times 6.5 = 187.2$ $9 \times 7 = 63$ $15.1 \times 6.7 = 101.2$ $12.9 \times 0.3 = 3.9$ $10.7 \times 0.9 = 9.6$ $20.1 \times 1 = 20.1$ $0.5 \times 3.4 \times 2.3 = 3.9$ $0.5 \times 2.3 \times 3.4 = 3.9$ $13.3 \times 2.3 = 30.5$ $0.5 \times 0.4 \times 5.4 = 1$ $0.5 \times 5.4 \times 0.3 = 0.9$ $12.6 \times 5.4 = 67.9$ $0.5 \times 8 \times 0.5 = 2.1$ $3.6 \times 8 = 28.9$ $0.5 \times 3.6 \times 3.4 = 6.1$ $0.5 \times 0.5 \times 8 = 2.1$ $3.6 \times 8 = 28.9$ $0.5 \times 3.6 \times 3.4 = 6.1$ $0.5 \times 3.5 \times 3.5 = 6.2$ $11.6 \times 3.5 = 40.8$ $0.5 \times 0.3 \times 0.3 = 0$ $10.1 \times 0.3 = 3$ $10.1 \times 2.3 = 23.2$ Arc = 34.5 Negative Arc = 2.9 Arc = 11.5 Arc = 4.5 Arc = 4.5 Negative Arc = 2.9 Arc = 34.5 Negative Arc = 17.7 Arc = 14.2 Negative Arc = 17.7
Third Floor	172.6 Sq ft	$17.2 \times 2.2 = 37.8$ $0.5 \times 2.3 \times 2.3 = 2.6$ $12.2 \times 2.3 = 27.7$ $15.4 \times 5.1 = 79.1$ $0.5 \times 0.5 \times 0.5 = 0.1$ $11.9 \times 0.5 = 5.9$ $8.8 \times 2.2 = 19.4$
Third Floor	173.3 Sq ft	$15 \times 7.1 = 106.5$ $0.5 \times 3.3 \times 3.3 = 5.3$ $10 \times 3.3 = 32.7$ $0.5 \times 1.7 \times 1.7 = 1.5$ $10 \times 1.7 = 17.6$ $0.5 \times 2.1 \times 2.4 = 2.5$ $0.5 \times 2.1 \times 2.1 = 2.3$ $2.1 \times 1.1 = 2.4$ $0.5 \times 3.3 \times 1.6 = 2.5$
Total Living Area (Rounded):	7390 Sq ft	

Building Sketch (Page - 4)

Borrower				
Property Address	11 Watertree Dr			
City	The Woodlands	County	Montgomery	State TX Zip Code 77380
Lender/Client				

TOTAL Sketch by a la mode

Area Calculations Summary

Non-living Area				
Covered Patio	103 Sq ft		4.6×22.4	= 103
Cvd Pat	63.6 Sq ft		7.9×6.4	= 50.6
			5.1×0	= 0
			$0.5 \times 5.1 \times 5.1$	= 13
Covered Patio	255.4 Sq ft		6.1×6.2	= 37.8
			6×6.4	= 38.4
			16×11.2	= 179.2
Tennis Court	4895 Sq ft		110×44.5	= 4895
Uncovered Patio	401.5 Sq ft		$0.5 \times 5.9 \times 6.4$	= 18.9
			$0.5 \times 1.1 \times 17$	= 9.3
			31×1.1	= 33.9
			$0.5 \times 2.6 \times 2.6$	= 3.4
			51.5×2.6	= 134.8
			$0.5 \times 1.6 \times 1.6$	= 1.3
			$0.5 \times 1.6 \times 1.6$	= 1.3
			1.6×29.2	= 47.5
			$0.5 \times 3.5 \times 3.5$	= 6
			$0.5 \times 3.5 \times 3.5$	= 6
			23.9×3.5	= 82.8
			Arc	= 8.9
			Arc	= 47.4
		Uncovered Balcony	75.1 Sq ft	
	$0.5 \times 5.1 \times 5.1$			= 13
	Arc			= 7.5
2 Car Port	714.9 Sq ft		25.8×26.3	= 677.3
			4.4×4.1	= 17.9
			4.8×4.1	= 19.7
Uncovered Balcony	37 Sq ft		2.2×0.9	= 2
			12.9×0.4	= 5.2
			6.8×3	= 20.7
			$0.5 \times 3 \times 3$	= 4.6
			$0.5 \times 3 \times 3$	= 4.6
3 Car Attached	850.7 Sq ft		15×4.1	= 61.5
			32×22.1	= 707.2
			4.9×8.7	= 42.6
			2.3×17.1	= 39.3
Uncovered Patio	298.4 Sq ft		23.2×9.2	= 213.4
			3.9×6.7	= 26.2
			$0.5 \times 2.4 \times 2.4$	= 2.9
			3.9×6.6	= 25.8
			$0.5 \times 2.4 \times 2.4$	= 2.9
			Arc	= 27.3