

ALFRED GEE SURVEY, ABSTRACT NO. 16, MADISON COUNTY, TEXAS

PAGE 2

PAGE 4

ELAYNE CAMPBELL VOL 156 PG 283 DISTRICT

ELLEN V. BOZZER, JR. VOL 293 PG 24 DISTRICT

NICK BAYARD ET. UX VOL 1714 PG. 1 DISTRICT

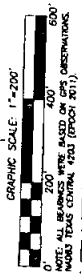
STEPHEN BELOVSKY ET. UX VOL 1763 PG. 77 DISTRICT

DAVID & DIANE McHORTER VOL 109 PG. 446 DISTRICT

ALFRED GEE SURVEY, ABSTRACT NO. 16, MADISON COUNTY, TEXAS

CURVE	ARC LENGTH	RADIUS	CHORD BEARING	CHORD LENGTH
C1	62.57	50.00	S 21° 35' 47" W	84.17
C2	62.57	50.00	N 10° 03' 23" E	84.17
C3	62.57	50.00	N 70° 36' 31" W	84.17
C4	68.98	75.01	S 57° 42' 30" W	63.53
C5	68.98	75.01	N 27° 51' 19" E	58.47
C6	62.45	50.00	S 88° 13' 21" E	84.17
C7	62.45	50.00	S 81° 50' 38" E	800.11
C8	62.45	50.00	S 82° 20' 35" E	1201.09
C9	62.45	50.00	S 84° 50' 27" W	718.91
C10	62.45	50.00	N 84° 50' 27" E	718.91
C11	62.45	50.00	N 84° 50' 27" E	713.25
C12	62.45	50.00	N 84° 50' 27" E	713.25
C13	62.45	50.00	N 84° 50' 27" E	713.25
C14	62.45	50.00	N 84° 50' 27" E	713.25
C15	62.45	50.00	N 84° 50' 27" E	713.25
C16	62.45	50.00	N 84° 50' 27" E	713.25
C17	62.45	50.00	N 84° 50' 27" E	713.25
C18	62.45	50.00	N 84° 50' 27" E	713.25

LINE	BEARING	DISTANCE
L1	N 81° 42' 05" W	188.85
L2	S 84° 50' 27" E	188.87
L3	N 81° 58' 39" W	181.58
L4	S 81° 58' 39" E	181.59
L5	S 81° 58' 39" E	181.59
L6	S 81° 58' 39" W	181.58
L7	S 81° 58' 39" W	181.58
L8	N 82° 02' 31" E	184.47
L9	N 81° 58' 39" E	184.47
L10	N 81° 58' 39" E	184.47
L11	S 81° 58' 39" E	184.47
L12	S 81° 58' 39" E	184.47
L13	S 81° 58' 39" E	184.47
L14	S 81° 58' 39" E	184.47
L15	S 81° 58' 39" E	184.47
L16	S 81° 58' 39" E	184.47
L17	S 81° 58' 39" E	184.47
L18	S 81° 58' 39" E	184.47
L19	S 81° 58' 39" E	184.47
L20	S 81° 58' 39" E	184.47
L21	S 81° 58' 39" E	184.47
L22	S 81° 58' 39" E	184.47
L23	S 81° 58' 39" E	184.47
L24	S 81° 58' 39" E	184.47
L25	S 81° 58' 39" E	184.47
L26	S 81° 58' 39" E	184.47
L27	S 81° 58' 39" E	184.47
L28	S 81° 58' 39" E	184.47
L29	S 81° 58' 39" E	184.47
L30	S 81° 58' 39" E	184.47
L31	S 81° 58' 39" E	184.47
L32	S 81° 58' 39" E	184.47
L33	S 81° 58' 39" E	184.47
L34	S 81° 58' 39" E	184.47
L35	S 81° 58' 39" E	184.47
L36	S 81° 58' 39" E	184.47
L37	S 81° 58' 39" E	184.47
L38	S 81° 58' 39" E	184.47
L39	S 81° 58' 39" E	184.47
L40	S 81° 58' 39" E	184.47
L41	S 81° 58' 39" E	184.47
L42	S 81° 58' 39" E	184.47
L43	S 81° 58' 39" E	184.47
L44	S 81° 58' 39" E	184.47
L45	S 81° 58' 39" E	184.47
L46	S 81° 58' 39" E	184.47
L47	S 81° 58' 39" E	184.47
L48	S 81° 58' 39" E	184.47
L49	S 81° 58' 39" E	184.47
L50	S 81° 58' 39" E	184.47
L51	S 81° 58' 39" E	184.47
L52	S 81° 58' 39" E	184.47
L53	S 81° 58' 39" E	184.47
L54	S 81° 58' 39" E	184.47
L55	S 81° 58' 39" E	184.47
L56	S 81° 58' 39" E	184.47
L57	S 81° 58' 39" E	184.47
L58	S 81° 58' 39" E	184.47
L59	S 81° 58' 39" E	184.47
L60	S 81° 58' 39" E	184.47
L61	S 81° 58' 39" E	184.47
L62	S 81° 58' 39" E	184.47
L63	S 81° 58' 39" E	184.47
L64	S 81° 58' 39" E	184.47
L65	S 81° 58' 39" E	184.47
L66	S 81° 58' 39" E	184.47
L67	S 81° 58' 39" E	184.47
L68	S 81° 58' 39" E	184.47
L69	S 81° 58' 39" E	184.47
L70	S 81° 58' 39" E	184.47



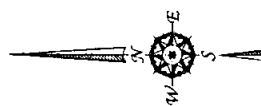
GRAPHIC SCALE: 1"=200'
 200' 400' 600'
 NOTE: ALL BEARINGS ARE ALSO 600' MAGN. TEXAS CENTRAL (201) (EPOCH 2011)

ELIYNE CAMPBELL
VOL. 380 PG. 660 DIRECT

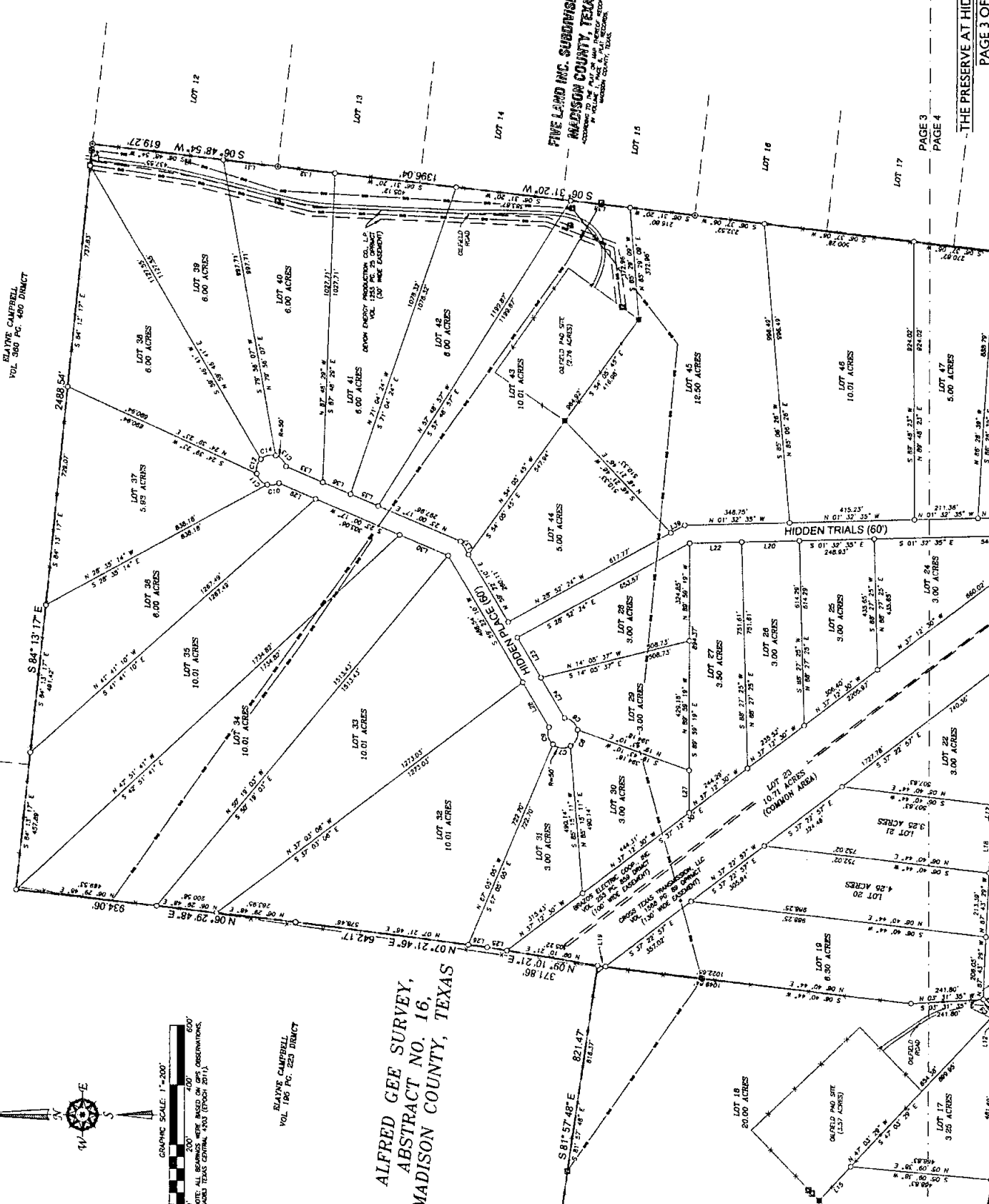
ELIYNE CAMPBELL
VOL. 186 PG. 223 DIRECT

ALFRED GEE SURVEY, ABSTRACT NO. 16, MADISON COUNTY, TEXAS

FIVE LAND INC. SUBDIVISION,
MADISON COUNTY, TEXAS
ACCORDING TO THE PLAN FILED IN THE PUBLIC RECORDS
IN VOLUME 1, PAGE 1 AND REFERRED TO BY
MADISON COUNTY, TEXAS.



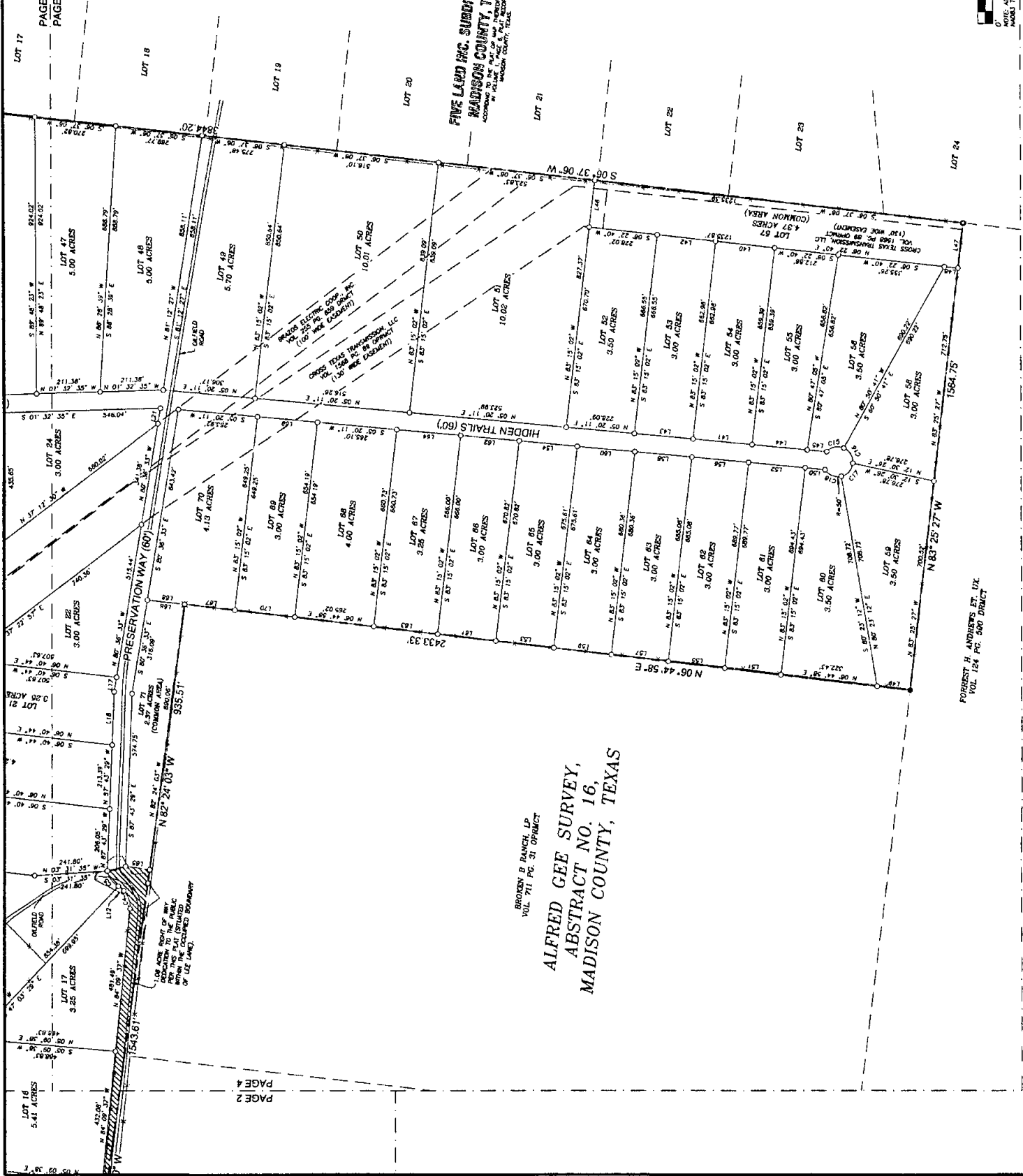
GRAPHIC SCALE: 1"=200'
0 200 400 600
NOTE: ALL BEARINGS WERE BASED ON GPS OBSERVATIONS.
MADE IN TEXAS GENERAL SURVEY (EPOCH 2011).



FIVE LAD INC. SUBDIVISION,
MADISON COUNTY, TEXAS
ACRES TO BE PART OF THIS SURVEY ACCORDING
TO COLLATERAL RECORDS IN MADISON COUNTY, TEXAS



GRAPHIC SCALE: 1"=200'
0' 100' 200'
NOTES: ALL DIMENSIONS WERE BASED ON GPS OBSERVATIONS.
MADISON COUNTY, TEXAS (EPOCH 2011).



BROOKEN B RANCH, LP
VOL. 711 PG. 31 OFFRECT
**ALFRED GEE SURVEY,
ABSTRACT NO. 16,
MADISON COUNTY, TEXAS**

FOREST H. ANDREWS ET. UX.
VOL. 124 PG. 500 DIRECT

Page 7 of 7

STATE OF TEXAS
COUNTY OF MADISON

I hereby certify that this instrument
was FILED on the date and at the time
stamped hereon by me and was duly
RECORDED in the Volume and Page of the
Official Public Records of Madison
County, Texas.

HONORABLE SUSANNE MORRIS, COUNTY CLERK
Madison County, TEXAS

Document Number: 116069

Amount: 71.00

Receipt Number: 29911

Vol: 1828 Page: 52

Recorded: Sep 13, 2021 at 11:16A

By:
Julia Bazan, Deputy