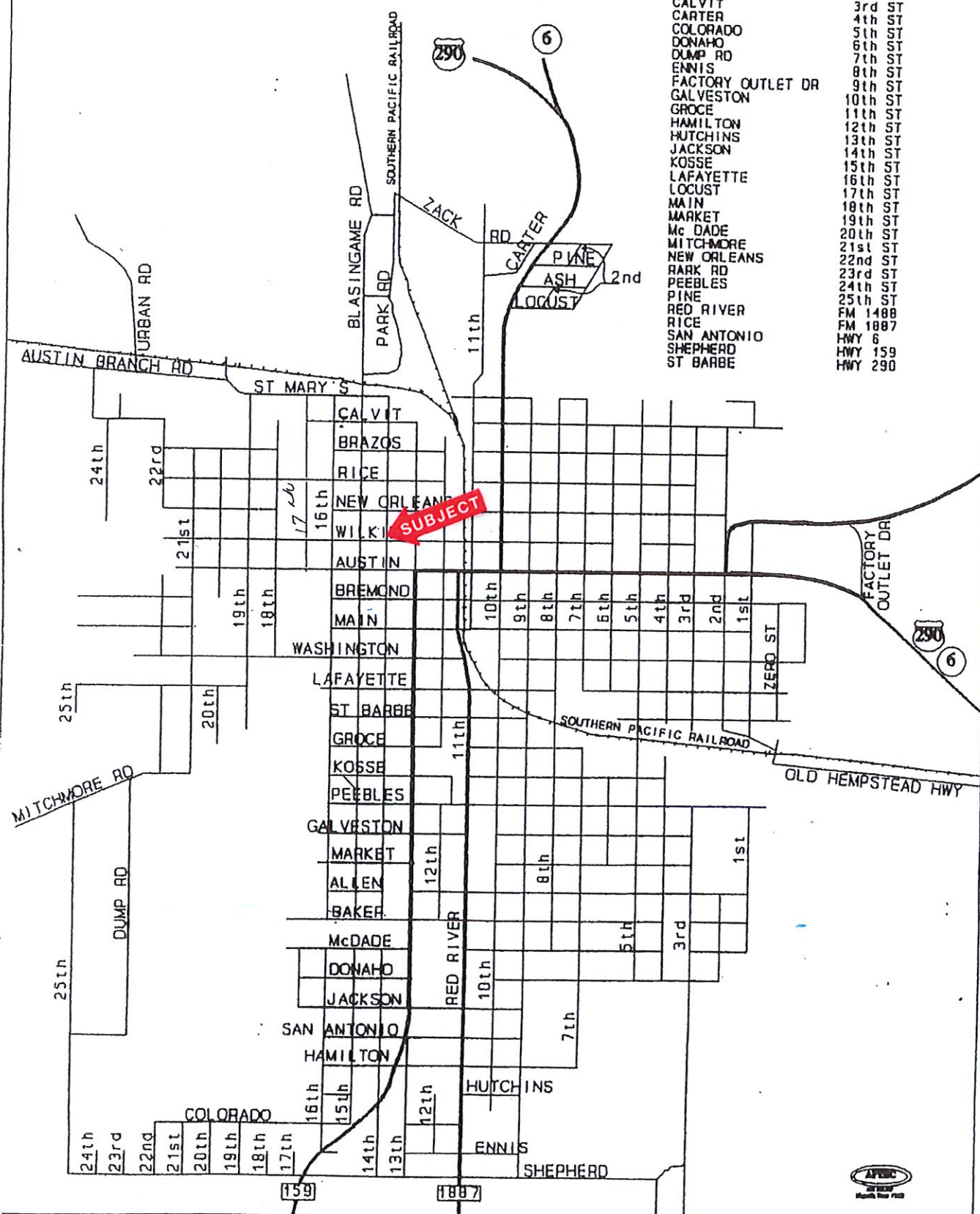
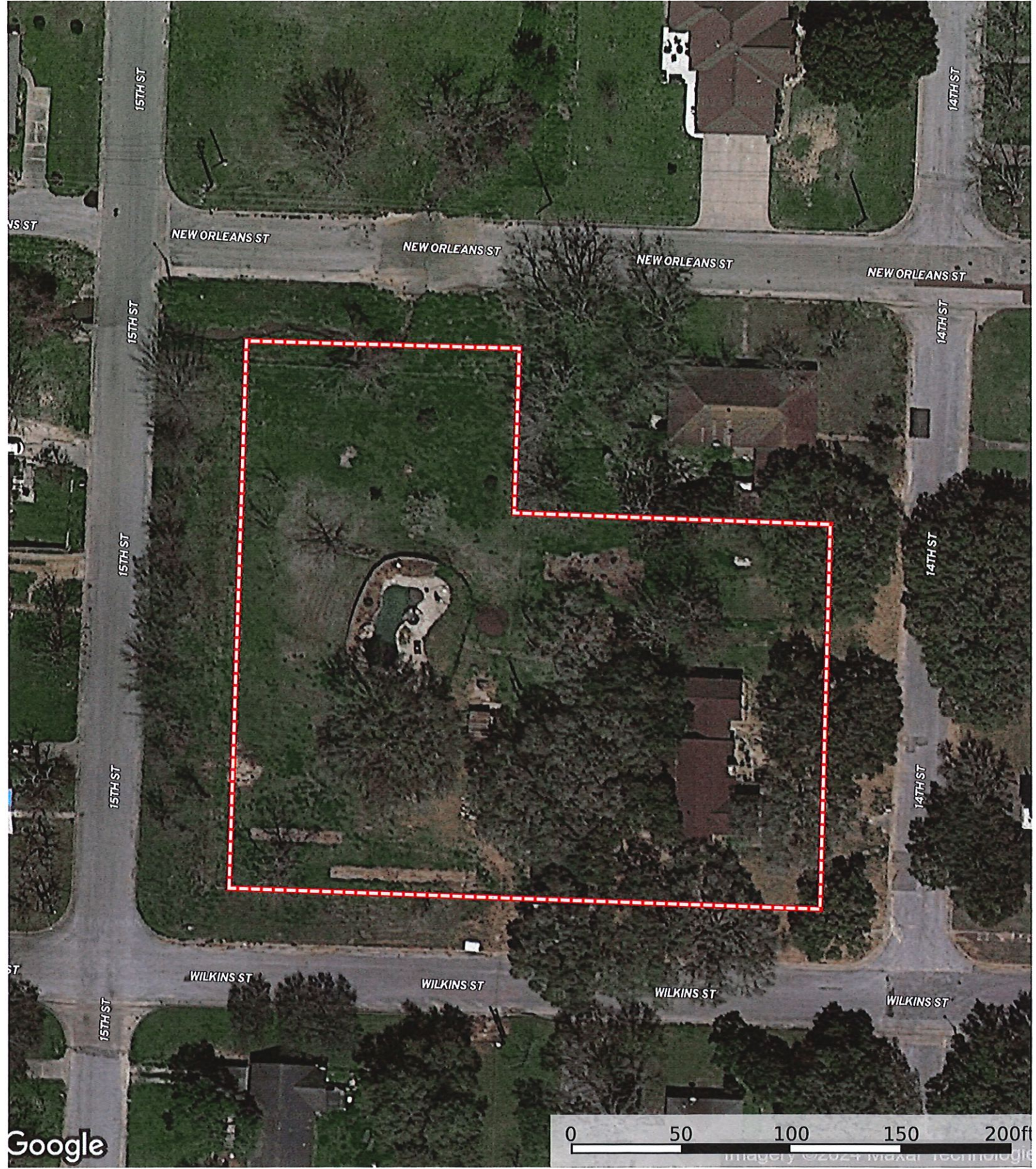


HEMPSTEAD

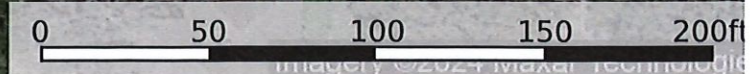
- ALLEN
 - ASH
 - AUSTIN
 - AUSTIN BRANCH
 - BAKER
 - BLASINGAME
 - BRAZOS
 - BREMOND
 - CALVIT
 - CARTER
 - COLORADO
 - DONAHO
 - DUMP RD
 - ENNIS
 - FACTORY OUTLET DR
 - GALVESTON
 - GROCE
 - HAMILTON
 - HUTCHINS
 - JACKSON
 - KOSSE
 - LAFAYETTE
 - LOCUST
 - MAIN
 - MARKET
 - Mc DADE
 - MITCHMORE
 - NEW ORLEANS
 - RARK RD
 - PEEBLES
 - PINE
 - RED RIVER
 - RICE
 - SAN ANTONIO
 - SHEPHERD
 - ST BARBE
- ST MARY'S
 - URBAN
 - WASHINGTON
 - WILKINS
 - ZACK RD
 - ZERO ST
 - 1st ST
 - 2nd ST
 - 3rd ST
 - 4th ST
 - 5th ST
 - 6th ST
 - 7th ST
 - 8th ST
 - 9th ST
 - 10th ST
 - 11th ST
 - 12th ST
 - 13th ST
 - 14th ST
 - 15th ST
 - 16th ST
 - 17th ST
 - 18th ST
 - 19th ST
 - 20th ST
 - 21st ST
 - 22nd ST
 - 23rd ST
 - 24th ST
 - 25th ST
 - FM 1408
 - FM 1887
 - HWY 6
 - HWY 159
 - HWY 290



30141001
Texas, AC +/-



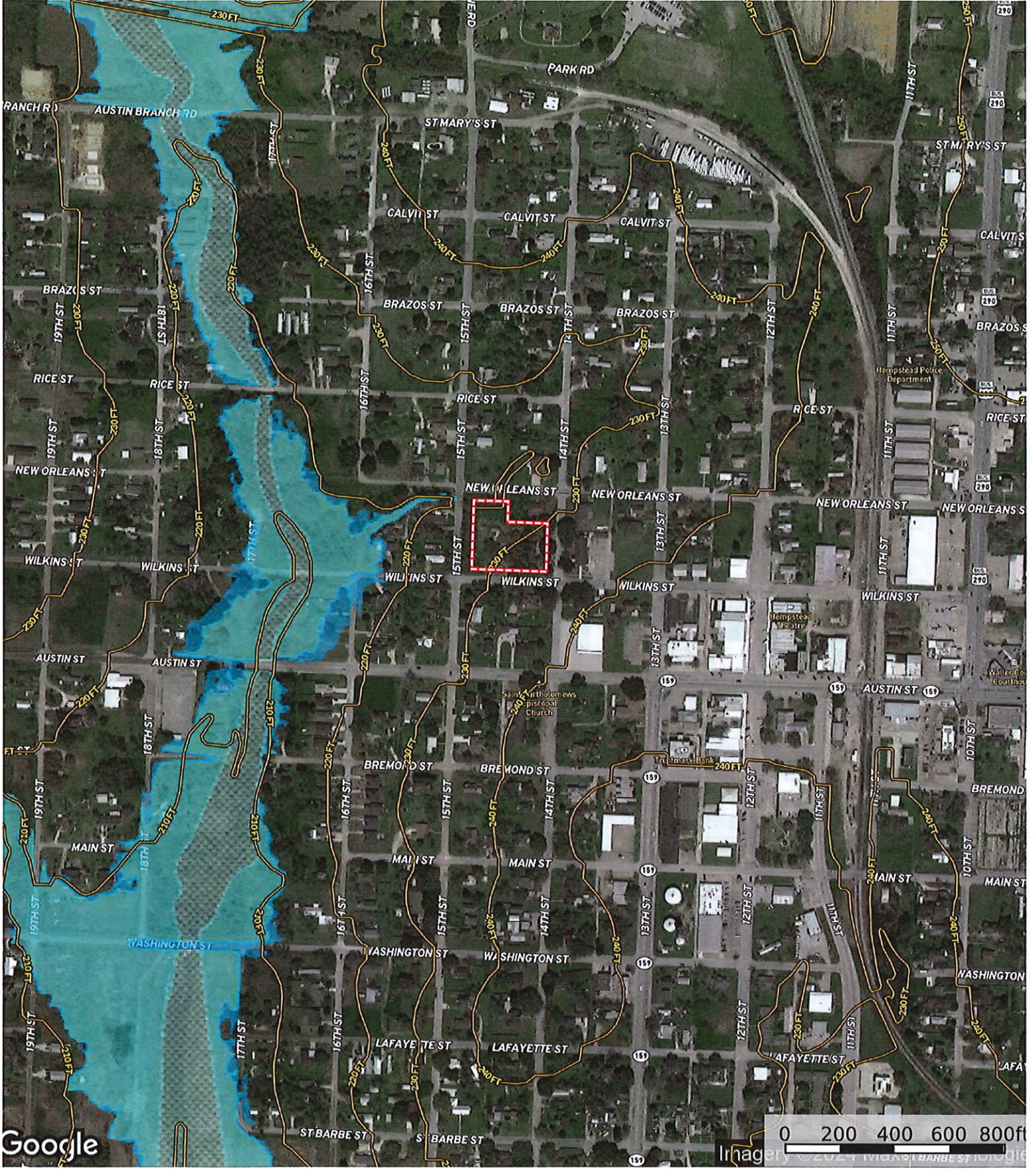
Google



Boundary

mothy Phelan

The information contained herein was obtained from sources deemed to be reliable.



Google

0 200 400 600 800ft
Imagery © 2024 INGIS BARBEST

- ▬ Boundary
- 100 Year Floodplain
- 500 Year Floodplain
- Floodway
- Special
- Unmapped/ Not Included