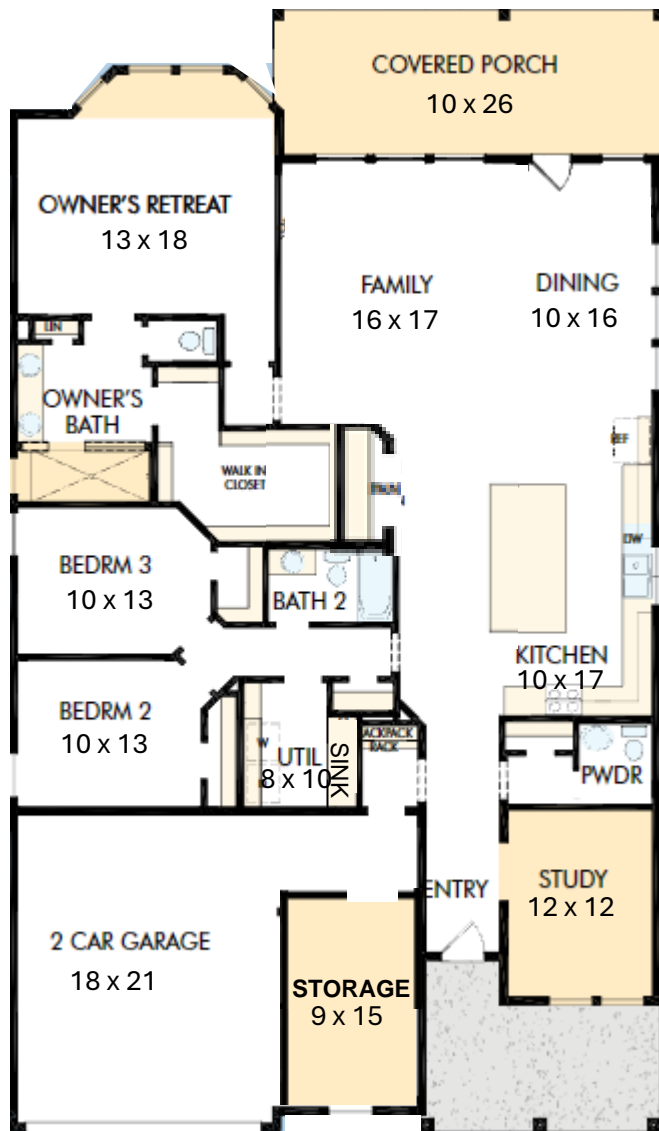


HOME SWEET *Quick Move-in* HOME

EXPLORE OUR QUICK MOVE-IN HOME OF THE MONTH!

THE HENNESSEY 'I'
29506 CEDAR ELM WAY



THE HENNESSEY 'I'

29615 Conifer St.
2305 SQ FT. / 1 STORY

3-Bedrooms, 2-1/2 Bath. Study with French Doors. Huge Island/breakfast bar. Granite counters w/gas range. Big Pantry. Oversized Dining. Big Living area overlooks huge covered patio overlooking large reserve area with walking trail. Super Shower w/bench @ Master Bath. Large walk-in closet. Wood-look tile floors. 2-Car Garage W/Storage room. Situated on beautiful cul-de-sac home site. Fully sodded & landscaped w/sprinklers. Sink at utility. Custom window coverings included. Ready for move-in!

FOR MORE INFORMATION, CONTACT:
Beverly Bradley, Sr. Sales Consultant/Owner
David Weekley Homes
832-687-0172

