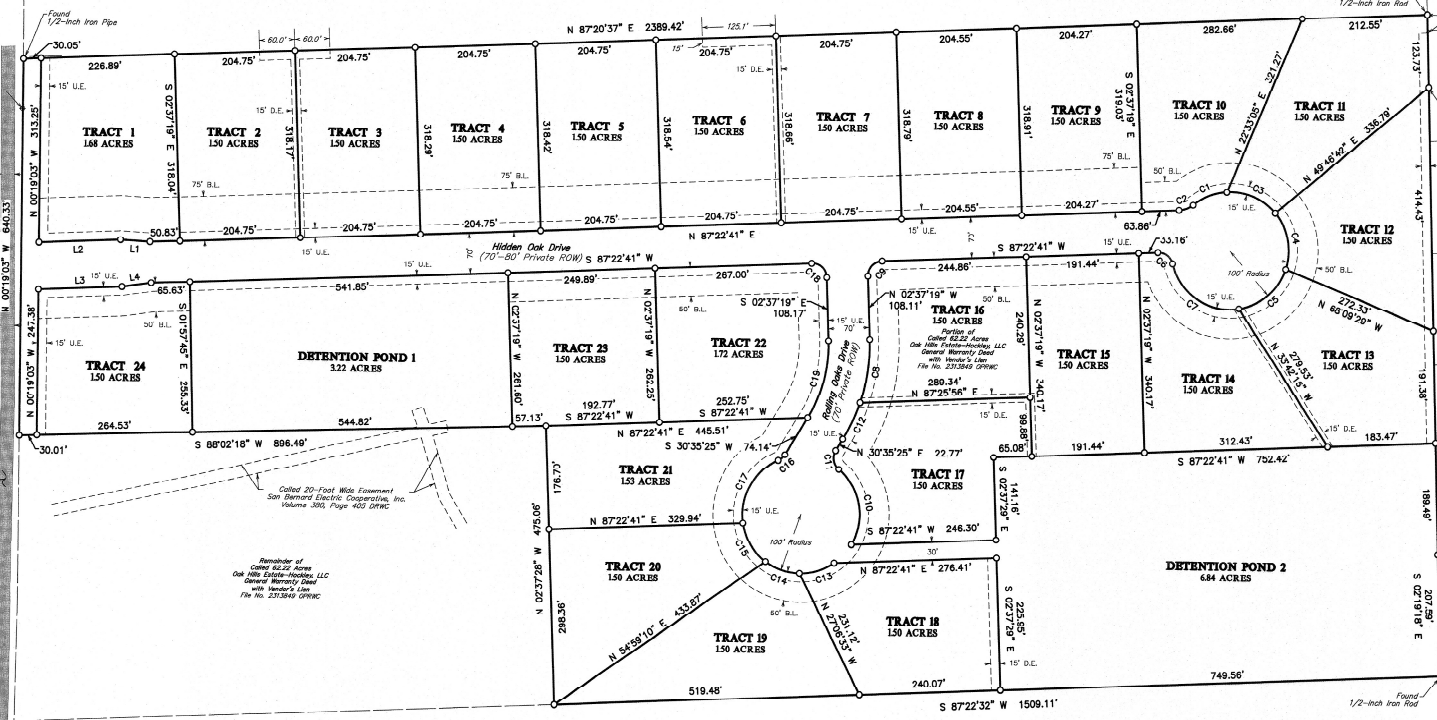


NORTH
SCALE: 1" = 100'
0 100 200 300

Called 42,455 Acres
James F. O'Neil, II and
wife Tracy A. O'Neil
Warranty Deed with
Vendor's Lien
Volume 1235, Page 84 OPRWC



Called 6,001 Acres
Kimberly A. Hunt and
Joseph J. Ponce
Warranty Deed with
Vendor's Lien
Volume 1235, Page 84 OPRWC

Called 1,000 Acres
MICHAEL JOSEPH SHELLEY and
LISSE ANN SHELLEY, Co-Trustees
of the SHELLEY FAMILY TRUST
Warranty Deed
Volume 1235, Page 201 OPRWC

Murrell Road
(50' Occupied R-O-W)

Called 20-Foot Wide Easement
San Bernard Electric Cooperative, Inc.
Volume 300, Page 403 OPRWC

Called 5,000 Acres
Shelly Babbie
Warranty Deed with Vendor's Lien
Volume 651, Page 367 OPRWC

Called 40,000 Acres
BAMA Ranch, LLC
General Warranty Deed
File No. 1552711 OPRWC

CURVE	RADIUS	ARC LENGTH	CHORD LENGTH	CHORD BEARING	DELTA ANGLE
C1	100.00	62.44	61.43	S 88°14'14" W	150°46'23"
C2	40.00	23.98	25.51	S 88°48'47" W	137°11'29"
C3	100.00	63.14	68.51	N 67°11'33" W	153°22'02"
C4	100.00	101.64	97.32	N 11°33'25" W	168°14'10"
C5	100.00	109.64	104.23	N 48°58'17" E	62°49'08"
C6	25.00	14.63	11.69	S 83°02'02" E	78°10'29"
C7	100.00	150.40	136.62	S 56°32'00" E	88°10'20"
C8	800.39	109.70	108.69	N 07°42'15" E	20°50'02"
C9	25.00	16.28	16.37	N 29°12'38" E	80°02'00"
C10	100.00	141.71	130.15	N 10°24'08" W	81°11'16"
C11	25.00	15.59	15.68	N 01°14'08" W	81°14'25"
C12	300.47	188.71	188.58	N 28°20'21" E	13°02'05"
C13	100.00	162.48	161.42	N 72°39'07" E	35°47'57"
C14	100.00	168.13	161.42	S 71°32'34" E	35°48'10"
C15	100.00	177.24	176.33	S 31°33'04" E	44°10'09"
C16	25.00	15.52	15.29	S 48°22'29" W	153°33'51"
C17	100.00	131.91	122.55	S 28°11'53" W	73°34'46"
C18	25.00	39.27	39.36	S 47°37'19" E	90°00'00"
C19	150.47	136.93	136.93	S 14°17'51" W	149°02'30"

LINE	BEARING	DISTANCE
L1	N 88°59'59" W	150.19
L2	S 87°22'32" W	138.76
L3	N 87°22'32" E	141.99
L4	N 81°33'48" E	150.19

Lot	Address	Street Name
1	205	HIDDEN OAK DRIVE
2	206	HIDDEN OAK DRIVE
3	207	HIDDEN OAK DRIVE
4	213	HIDDEN OAK DRIVE
5	214	HIDDEN OAK DRIVE
6	215	HIDDEN OAK DRIVE
7	216	HIDDEN OAK DRIVE
8	217	HIDDEN OAK DRIVE
9	218	HIDDEN OAK DRIVE
10	219	HIDDEN OAK DRIVE
11	220	HIDDEN OAK DRIVE
12	221	HIDDEN OAK DRIVE
13	222	HIDDEN OAK DRIVE
14	223	HIDDEN OAK DRIVE
15	224	HIDDEN OAK DRIVE
16	225	HIDDEN OAK DRIVE
17	226	HIDDEN OAK DRIVE
18	227	HIDDEN OAK DRIVE
19	228	HIDDEN OAK DRIVE
20	229	HIDDEN OAK DRIVE
21	230	HIDDEN OAK DRIVE
22	231	HIDDEN OAK DRIVE
23	232	HIDDEN OAK DRIVE
24	233	HIDDEN OAK DRIVE
25	234	HIDDEN OAK DRIVE
26	235	HIDDEN OAK DRIVE
27	236	HIDDEN OAK DRIVE
28	237	HIDDEN OAK DRIVE
29	238	HIDDEN OAK DRIVE
30	239	HIDDEN OAK DRIVE
31	240	HIDDEN OAK DRIVE
32	241	HIDDEN OAK DRIVE
33	242	HIDDEN OAK DRIVE
34	243	HIDDEN OAK DRIVE
35	244	HIDDEN OAK DRIVE
36	245	HIDDEN OAK DRIVE
37	246	HIDDEN OAK DRIVE
38	247	HIDDEN OAK DRIVE
39	248	HIDDEN OAK DRIVE
40	249	HIDDEN OAK DRIVE
41	250	HIDDEN OAK DRIVE
42	251	HIDDEN OAK DRIVE
43	252	HIDDEN OAK DRIVE
44	253	HIDDEN OAK DRIVE
45	254	HIDDEN OAK DRIVE
46	255	HIDDEN OAK DRIVE
47	256	HIDDEN OAK DRIVE
48	257	HIDDEN OAK DRIVE
49	258	HIDDEN OAK DRIVE
50	259	HIDDEN OAK DRIVE
51	260	HIDDEN OAK DRIVE
52	261	HIDDEN OAK DRIVE
53	262	HIDDEN OAK DRIVE
54	263	HIDDEN OAK DRIVE
55	264	HIDDEN OAK DRIVE
56	265	HIDDEN OAK DRIVE
57	266	HIDDEN OAK DRIVE
58	267	HIDDEN OAK DRIVE
59	268	HIDDEN OAK DRIVE
60	269	HIDDEN OAK DRIVE
61	270	HIDDEN OAK DRIVE
62	271	HIDDEN OAK DRIVE
63	272	HIDDEN OAK DRIVE
64	273	HIDDEN OAK DRIVE
65	274	HIDDEN OAK DRIVE
66	275	HIDDEN OAK DRIVE
67	276	HIDDEN OAK DRIVE
68	277	HIDDEN OAK DRIVE
69	278	HIDDEN OAK DRIVE
70	279	HIDDEN OAK DRIVE
71	280	HIDDEN OAK DRIVE
72	281	HIDDEN OAK DRIVE
73	282	HIDDEN OAK DRIVE
74	283	HIDDEN OAK DRIVE
75	284	HIDDEN OAK DRIVE
76	285	HIDDEN OAK DRIVE
77	286	HIDDEN OAK DRIVE
78	287	HIDDEN OAK DRIVE
79	288	HIDDEN OAK DRIVE
80	289	HIDDEN OAK DRIVE
81	290	HIDDEN OAK DRIVE
82	291	HIDDEN OAK DRIVE
83	292	HIDDEN OAK DRIVE
84	293	HIDDEN OAK DRIVE
85	294	HIDDEN OAK DRIVE
86	295	HIDDEN OAK DRIVE
87	296	HIDDEN OAK DRIVE
88	297	HIDDEN OAK DRIVE
89	298	HIDDEN OAK DRIVE
90	299	HIDDEN OAK DRIVE
91	300	HIDDEN OAK DRIVE
92	301	HIDDEN OAK DRIVE
93	302	HIDDEN OAK DRIVE
94	303	HIDDEN OAK DRIVE
95	304	HIDDEN OAK DRIVE
96	305	HIDDEN OAK DRIVE
97	306	HIDDEN OAK DRIVE
98	307	HIDDEN OAK DRIVE
99	308	HIDDEN OAK DRIVE
100	309	HIDDEN OAK DRIVE
101	310	HIDDEN OAK DRIVE
102	311	HIDDEN OAK DRIVE
103	312	HIDDEN OAK DRIVE
104	313	HIDDEN OAK DRIVE
105	314	HIDDEN OAK DRIVE
106	315	HIDDEN OAK DRIVE
107	316	HIDDEN OAK DRIVE
108	317	HIDDEN OAK DRIVE
109	318	HIDDEN OAK DRIVE
110	319	HIDDEN OAK DRIVE
111	320	HIDDEN OAK DRIVE
112	321	HIDDEN OAK DRIVE
113	322	HIDDEN OAK DRIVE
114	323	HIDDEN OAK DRIVE
115	324	HIDDEN OAK DRIVE
116	325	HIDDEN OAK DRIVE
117	326	HIDDEN OAK DRIVE
118	327	HIDDEN OAK DRIVE
119	328	HIDDEN OAK DRIVE
120	329	HIDDEN OAK DRIVE
121	330	HIDDEN OAK DRIVE
122	331	HIDDEN OAK DRIVE
123	332	HIDDEN OAK DRIVE
124	333	HIDDEN OAK DRIVE
125	334	HIDDEN OAK DRIVE
126	335	HIDDEN OAK DRIVE
127	336	HIDDEN OAK DRIVE
128	337	HIDDEN OAK DRIVE
129	338	HIDDEN OAK DRIVE
130	339	HIDDEN OAK DRIVE
131	340	HIDDEN OAK DRIVE
132	341	HIDDEN OAK DRIVE
133	342	HIDDEN OAK DRIVE
134	343	HIDDEN OAK DRIVE
135	344	HIDDEN OAK DRIVE
136	345	HIDDEN OAK DRIVE
137	346	HIDDEN OAK DRIVE
138	347	HIDDEN OAK DRIVE
139	348	HIDDEN OAK DRIVE
140	349	HIDDEN OAK DRIVE
141	350	HIDDEN OAK DRIVE
142	351	HIDDEN OAK DRIVE
143	352	HIDDEN OAK DRIVE
144	353	HIDDEN OAK DRIVE
145	354	HIDDEN OAK DRIVE
146	355	HIDDEN OAK DRIVE
147	356	HIDDEN OAK DRIVE
148	357	HIDDEN OAK DRIVE
149	358	HIDDEN OAK DRIVE
150	359	HIDDEN OAK DRIVE
151	360	HIDDEN OAK DRIVE
152	361	HIDDEN OAK DRIVE
153	362	HIDDEN OAK DRIVE
154	363	HIDDEN OAK DRIVE
155	364	HIDDEN OAK DRIVE
156	365	HIDDEN OAK DRIVE
157	366	HIDDEN OAK DRIVE
158	367	HIDDEN OAK DRIVE
159	368	HIDDEN OAK DRIVE
160	369	HIDDEN OAK DRIVE
161	370	HIDDEN OAK DRIVE
162	371	HIDDEN OAK DRIVE
163	372	HIDDEN OAK DRIVE
164	373	HIDDEN OAK DRIVE
165	374	HIDDEN OAK DRIVE
166	375	HIDDEN OAK DRIVE
167	376	HIDDEN OAK DRIVE
168	377	HIDDEN OAK DRIVE
169	378	HIDDEN OAK DRIVE
170	379	HIDDEN OAK DRIVE
171	380	HIDDEN OAK DRIVE
172	381	HIDDEN OAK DRIVE
173	382	HIDDEN OAK DRIVE
174	383	HIDDEN OAK DRIVE
175	384	HIDDEN OAK DRIVE
176	385	HIDDEN OAK DRIVE
177	386	HIDDEN OAK DRIVE
178	387	HIDDEN OAK DRIVE
179	388	HIDDEN OAK DRIVE
180	389	HIDDEN OAK DRIVE
181	390	HIDDEN OAK DRIVE
182	391	HIDDEN OAK DRIVE
183	392	HIDDEN OAK DRIVE
184	393	HIDDEN OAK DRIVE
185	394	HIDDEN OAK DRIVE
186	395	HIDDEN OAK DRIVE
187	396	HIDDEN OAK DRIVE
188	397	HIDDEN OAK DRIVE
189	398	HIDDEN OAK DRIVE
190	399	HIDDEN OAK DRIVE
191	400	HIDDEN OAK DRIVE
192	401	HIDDEN OAK DRIVE
193	402	HIDDEN OAK DRIVE
194	403	HIDDEN OAK DRIVE
195	404	HIDDEN OAK DRIVE
196	405	HIDDEN OAK DRIVE
197	406	HIDDEN OAK DRIVE
198	407	HIDDEN OAK DRIVE
199	408	HIDDEN OAK DRIVE
200	409	HIDDEN OAK DRIVE
201	410	HIDDEN OAK DRIVE
202	411	HIDDEN OAK DRIVE
203	412	HIDDEN OAK DRIVE
204	413	HIDDEN OAK DRIVE
205	414	HIDDEN OAK DRIVE

FINAL PLAT
OF
OAK HILLS ESTATES
BEING
5222 ACRES
CREATING
24 LOTS, 1 BLOCK,
AND
2 DETENTION POND RESERVES
OUT OF THE
SAMUEL McCARLEY SURVEY, A-43
WALKER COUNTY, TEXAS
MAY 2024



OWNER/DEVELOPER:
Oak Hills Estates-Hockley LLC
Robert Hockroath
713-817-4438
bob@ohs-lex.com
24122 Margerstadt Road
Hockley, Texas 77447
James Henderson
281-732-6338
jehenderson@quiddityglobal.net
15550 FM 3622
Waller, Texas 77484

Team of Licensed Professional Engineers and Land Surveyors Reg. No. 12049300
Texas Board of Professional Engineers and Land Surveyors Reg. No. 23290
15550 Veterans Drive, Suite 100-Collings Station, TX 77480-1793 TX 77480