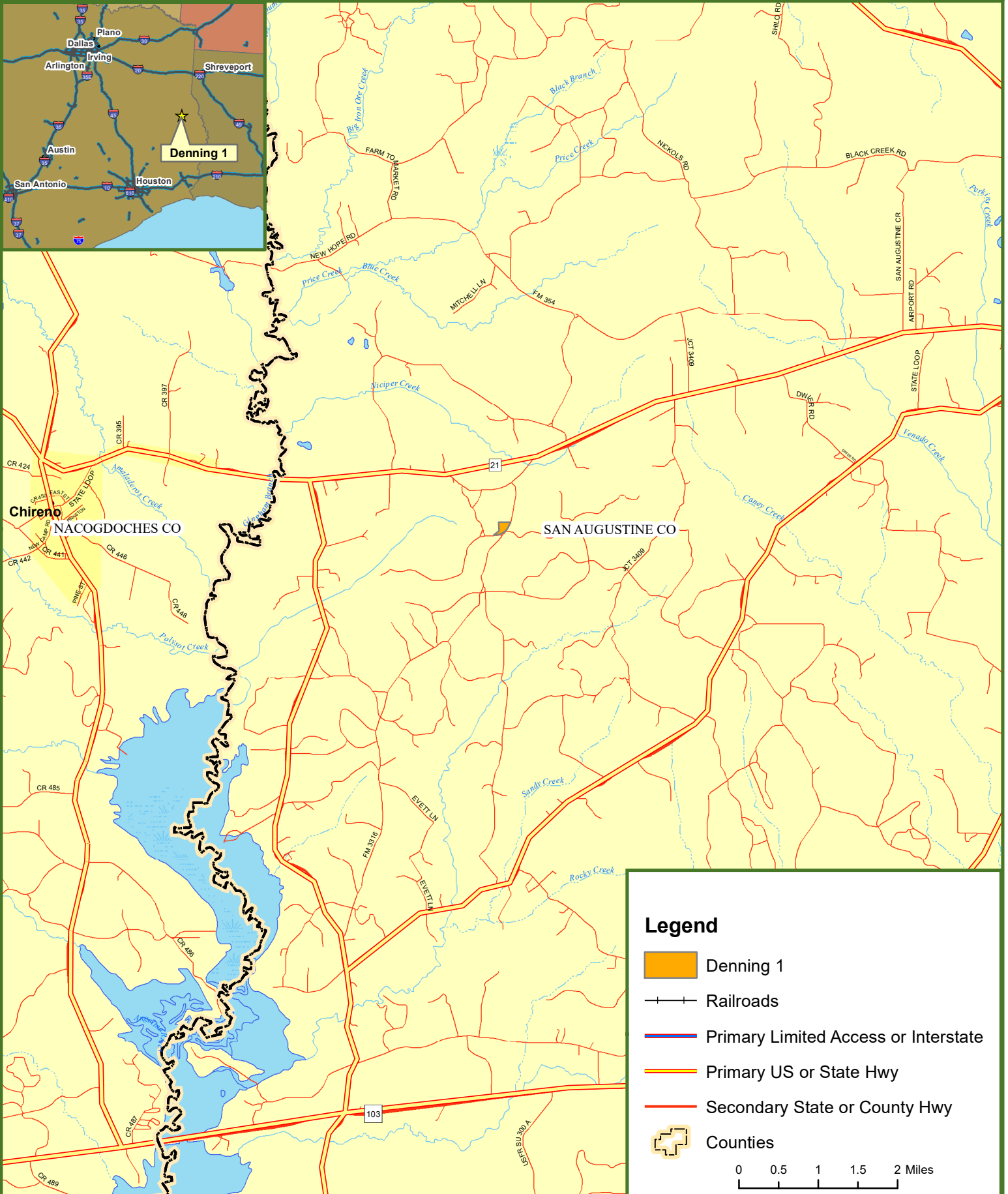










Locus Map Denning 1 San Augustine County, TX 11 +/- Acres



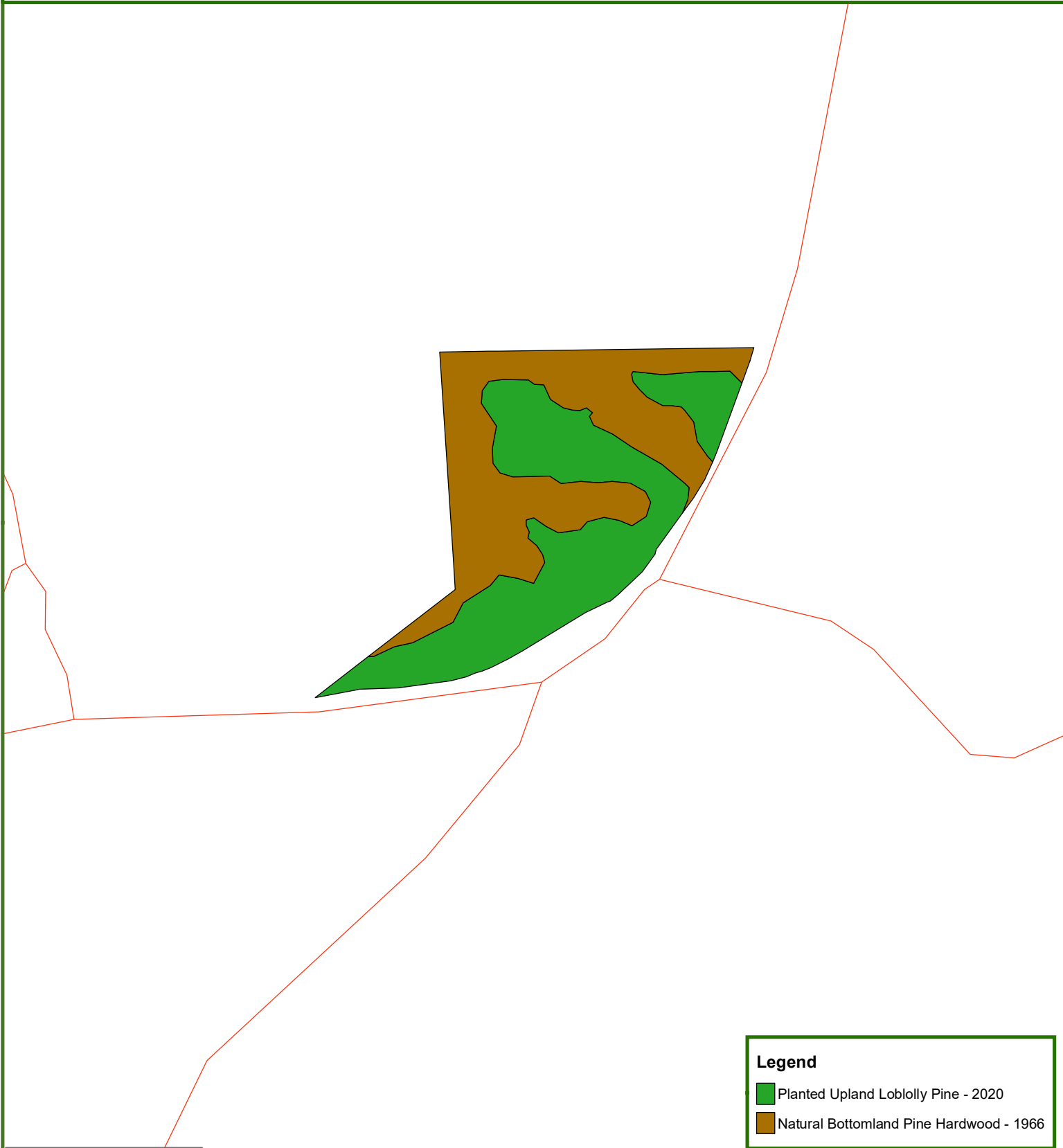
Legend

-  Denning 1
-  Railroads
-  Primary Limited Access or Interstate
-  Primary US or State Hwy
-  Secondary State or County Hwy
-  Counties



Denning 1

11 +/- Acres
San Augustine County, TX



This is Not A Survey

Legend

- Planted Upland Loblolly Pine - 2020
- Natural Bottomland Pine Hardwood - 1966

0 165 330 Feet

This map was produced from information supplied by the seller and the use of aerial photography. The boundary lines portrayed on this map are approximate and could be different than the actual location of the boundaries found in the field.







Denning 1

11 +/- Acres
San Augustine County, TX

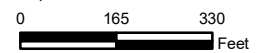


This is Not A Survey

Legend

-  Denning 1
-  Primary Road
-  Secondary Road
-  Railroad

Imagery source: Esri, Maxar, Earthstar Geographics, and the GIS User Community

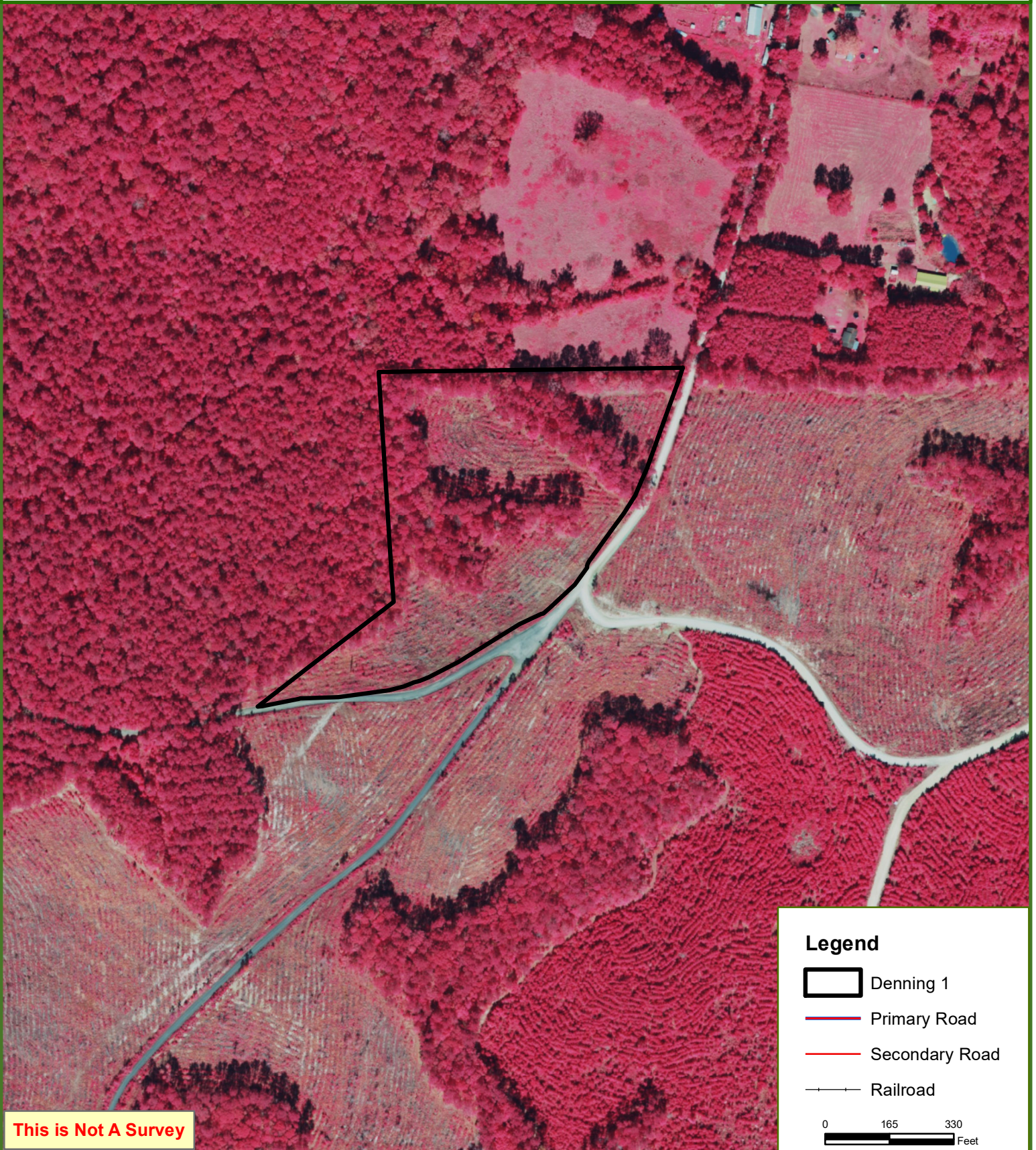


This map was produced from information supplied by the seller and the use of aerial photography. The boundary lines portrayed on this map are approximate and could be different than the actual location of the boundaries found in the field.







Denning 1

11 +/- Acres
San Augustine County, TX



This is Not A Survey

Legend

-  Denning 1
-  Primary Road
-  Secondary Road
-  Railroad

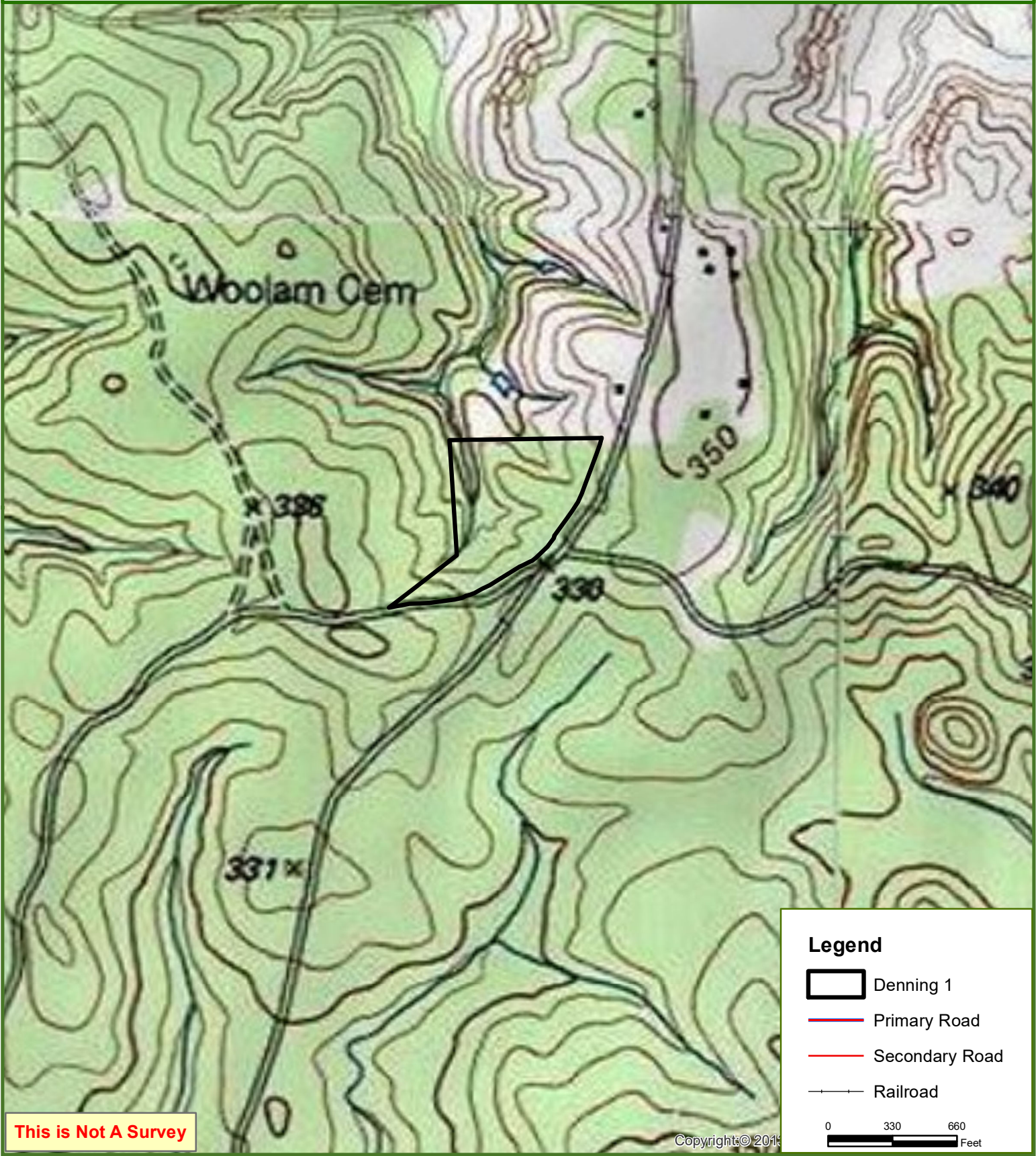
0 165 330
Feet

This map was produced from information supplied by the seller and the use of aerial photography. The boundary lines portrayed on this map are approximate and could be different than the actual location of the boundaries found in the field.



Denning 1

11 +/- Acres
San Augustine County, TX



This is Not A Survey

This map was produced from information supplied by the seller and the use of aerial photography. The boundary lines portrayed on this map are approximate and could be different than the actual location of the boundaries found in the field.