

# 3119 Bay Spring Dr League City, TX 77573

4 bed 2.5 bath 2 car garage 1996 2,410 SF 7,753 LOT  
Dover Model Game Room Covered Back Porch  
MLS #25498901 \$373,500 \$155/SF



## FEATURES & AMENITIES

### ENTRY (11 x 6'4)

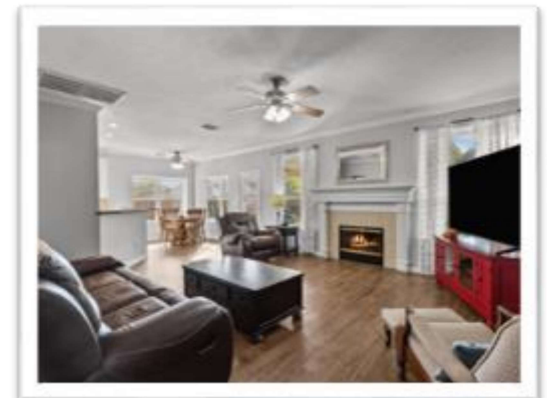
18' ceiling height  
RING doorbell  
Chandelier lighting  
Solid wood paneled front door  
Luxury tile woodgrain flooring  
Oversized baseboards

### DINING ROOM (13'7 x 11'4)

9' ceiling height  
Chandelier lighting  
Luxury tile woodgrain flooring  
Two large windows with plantation shutters  
Crown molding, baseboards, and chair rail

### LIVING ROOM (17'7 x 16)

9' ceiling height  
Large windows  
Lighted ceiling fan  
Luxury tile woodgrain flooring  
Crown molding and baseboards  
Gas/wood log fireplace with key starter, tile backsplash,  
wood mantle & decorative trim



### BREAKFAST ROOM (8'6 x 8'6)

9' ceiling height  
Lighted ceiling fan  
Luxury tile woodgrain flooring  
Crown molding and baseboards  
Two sets of windows with deep window sills

(682) 224-9848

LINDA TREADWAY  
EXP REALTY

Linda.Treadway@eXprealty.com

**KITCHEN****(14'2 x 11'6)**

9' ceiling height

Baseboards

Tile flooring

Window above sink

LED ceiling light

Luxury tile woodgrain flooring

Breakfast bar with seating for four

Oversized crown molding and baseboards

LED ceiling light; 2<sup>nd</sup> light above sink window

White upper and lower cabinets with tile backsplash and granite countertops

Stainless double-sink with stainless faucet and vegetable sprayer

Built-in stainless steel oven, microwave, dishwasher, and gas stove

BONUS! Refrigerator included!

**UTILITY ROOM****(5'4 x 8'3)**

Kitchen pantry storage with 5 shelves

Baseboards

Two large windows with plantation shutters

Luxury tile woodgrain flooring

Clothes rod and wall cabinet

BONUS! Washer &amp; dryer included!

**PRIMARY BEDROOM - DOWN****(17'4 x 12)**

11' recessed ceiling height

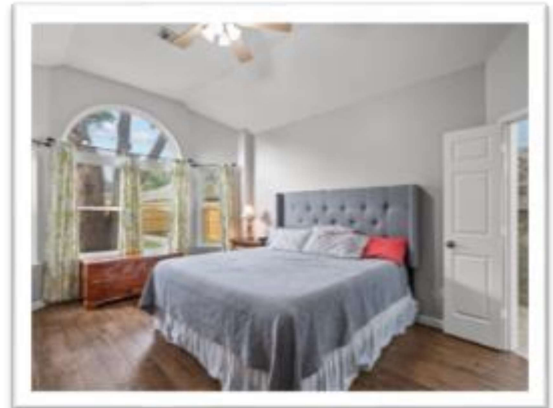
Baseboards

Bay window and large transom above

Luxury tile woodgrain flooring

Lighted ceiling fan

Private entry to bedroom with linen closet

**PRIMARY BATHROOM - DOWN** **(11 x 13)**

11' ceiling height

Large opaque window

Garden tub and frameless walk-in shower

Two white cabinets 30" and 36" tall with vanity and decorative wall mirrors

Chandelier and vanity lighting

Tile flooring

Private toilet area

Attached to Primary Walk-in Closet (11 x 6)

**BEDROOM 2 (Blue bedding) (13 x 11)**

8' ceiling height  
Oversized baseboards  
Large window  
Carpet flooring  
Lighted ceiling fan  
Closet barn doors & chair rail

**BEDROOM 3 (11'6 x 10'5)**

8' ceiling height  
Two large windows with plantation shutters  
Carpet flooring  
Lighted ceiling fan  
Baseboards & Closet double sliding doors



**BEDROOM 4 (11'3 x 11'3)**

10' recessed ceiling height  
Lighted ceiling fan  
Baseboards and decorative chair rail  
Closet double sliding door  
Two windows with plantation shutters and arched transom window  
Carpet flooring

**BATH 2 - UP (9'4 x 7'3)**

8' ceiling height  
Tile baseboards and matching flooring  
Wall mirror and vanity lighting  
White cabinet with cultured marble countertop, 2 sinks  
Tub/shower combination  
Storage closet  
Large window with 2" white blinds

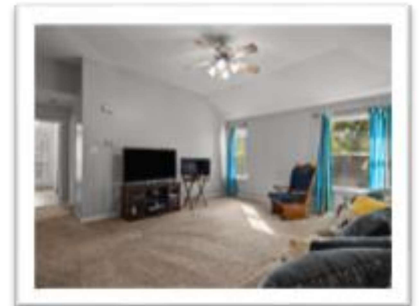


**BATH 2.5 - DOWN (4'9 x 5)**

9' ceiling height  
Baseboards  
Tile flooring  
White cabinet with cultured marble countertop and sink  
Wall mirror and vanity lighting

**GAME/TV ROOM - UP (14'3 x 16'4)**

10' recessed ceiling height  
Baseboards  
Two large windows  
Carpet flooring



(682) 224-9848

LINDA TREADWAY  
EXP REALTY

Linda.Treadway@eXprealty.com

## **GARAGE**

Space for 2 cars

Wall shelves

Extended platform area at front of garage for refrigerators, workbenches, etc.

BONUS! Small freezer & black metal storage shelf stay!

## **BACKYARD**

Large covered porch wired and ready for sound

TV wall mount

Extended porch with stamped, painted concrete

Ceiling fan, (6) can lights and (2) flood lights

Storm door with pet entry

Fence

BONUS! Wicker Patio Furniture, Black Steel Patio Furniture,  
and TV included



## **EXTERIOR**

Corner lot

Rainbird water sprinkler for front yard

## **IMPROVEMENTS**

- Interior & Exterior painted - 2021
- Vinyl windows replaced throughout the entire home - 2018
- Covered back porch - 2018
- (2) 15 Seer Air Conditioners - 2014
- HVAC (condenser, furnace, coil, plenum, drain pan) - 2014
- Roof - 2012
- Two digital thermostats

## **NON-REALTY ITEMS INCLUDED**

- Receiver - providing sound to the back porch
- Maytag Washer, Model MVW7230HW0, Serial CX1170411
- Maytag Dryer, Model MEDB835DW4, Serial M94256777
- Refrigerator, Model LTC24380ST, Serial 403MRFP09475
- Black metal storage shelf
- Small freezer in garage
- Wicker patio furniture (L shape couch, 2 chairs, 1 ottoman, 1 glass top table and cushions)
- Black metal game table, 4 chairs and cushions
- Backyard TV

(682) 224-9848

LINDA TREADWAY  
EXP REALTY

Linda.Treadway@eXprealty.com

**Neighborhood amenities:**

- Community pool
- Playground
- Tennis courts
- South Shore Country Club - Paid membership only

**Taxes w/out exemptions**

\$5,609.22 Tax Rate 1.671500

**HOA - South Shore Village Community Association, Inc.** - 281-480-2563, Amy Johnson,  
[www.southshorevillage.communisite.com](http://www.southshorevillage.communisite.com)

Resale: \$225 Transfer Fee: \$200 \$566 year in dues

**Please verify all measurements and information.**