



chesmar.com

# THE AMERICANA COLLECTION

**BRADFORD**

| plan 9120 - approx. 2,341sqft



elevation B - brick - standard



elevation B - stone - optional



elevation D - standard

Availability of elevation options may vary by community, please ask your New Home Consultant for details on the current offerings in the community you are considering. Square footage and room dimensions are approximate and may vary per elevation. Window placement, roof line and porches may also vary by elevation. Plans, features, prices, and availability are subject to change without notice. Print date: 6-19-24





chesmar.com

# THE AMERICANA COLLECTION

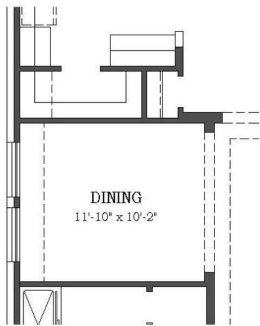
## BRADFORD

plan 9120 - approx. 2,341sqft

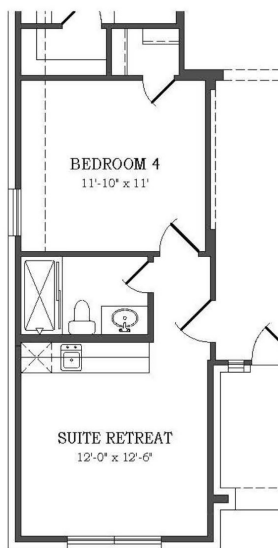
### THIS HOME FEATURES | OPTIONS

- 4 Bedrooms
- 3 Baths
- Study
- Covered Patio
- 2-Car Attached Garage

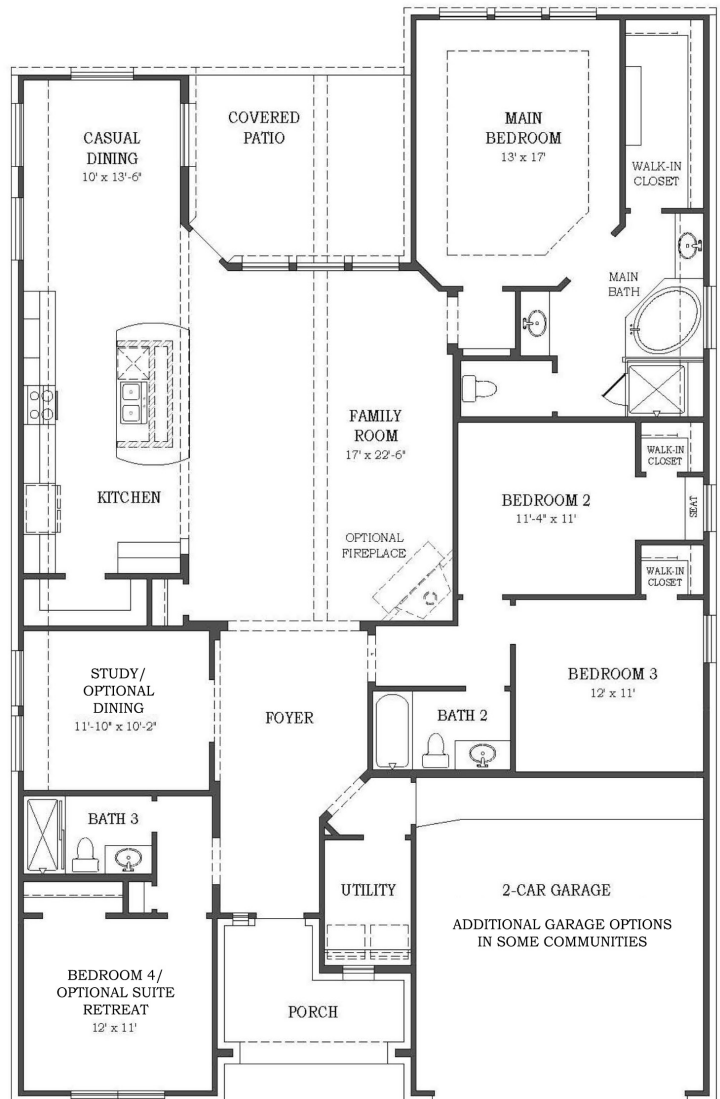
- Fireplace
- Dining Room at Study
- Suite Retreat at Bedroom 4



**OPTIONAL DINING**



**OPTIONAL SUITE RETREAT**



Availability of elevation options may vary by community, please ask your New Home Consultant for details on the current offerings in the community you are considering. Square footage and room dimensions are approximate and may vary per elevation. Window placement, roof line and porches may also vary by elevation. Plans, features, prices, and availability are subject to change without notice. Print date: 6-19-24

