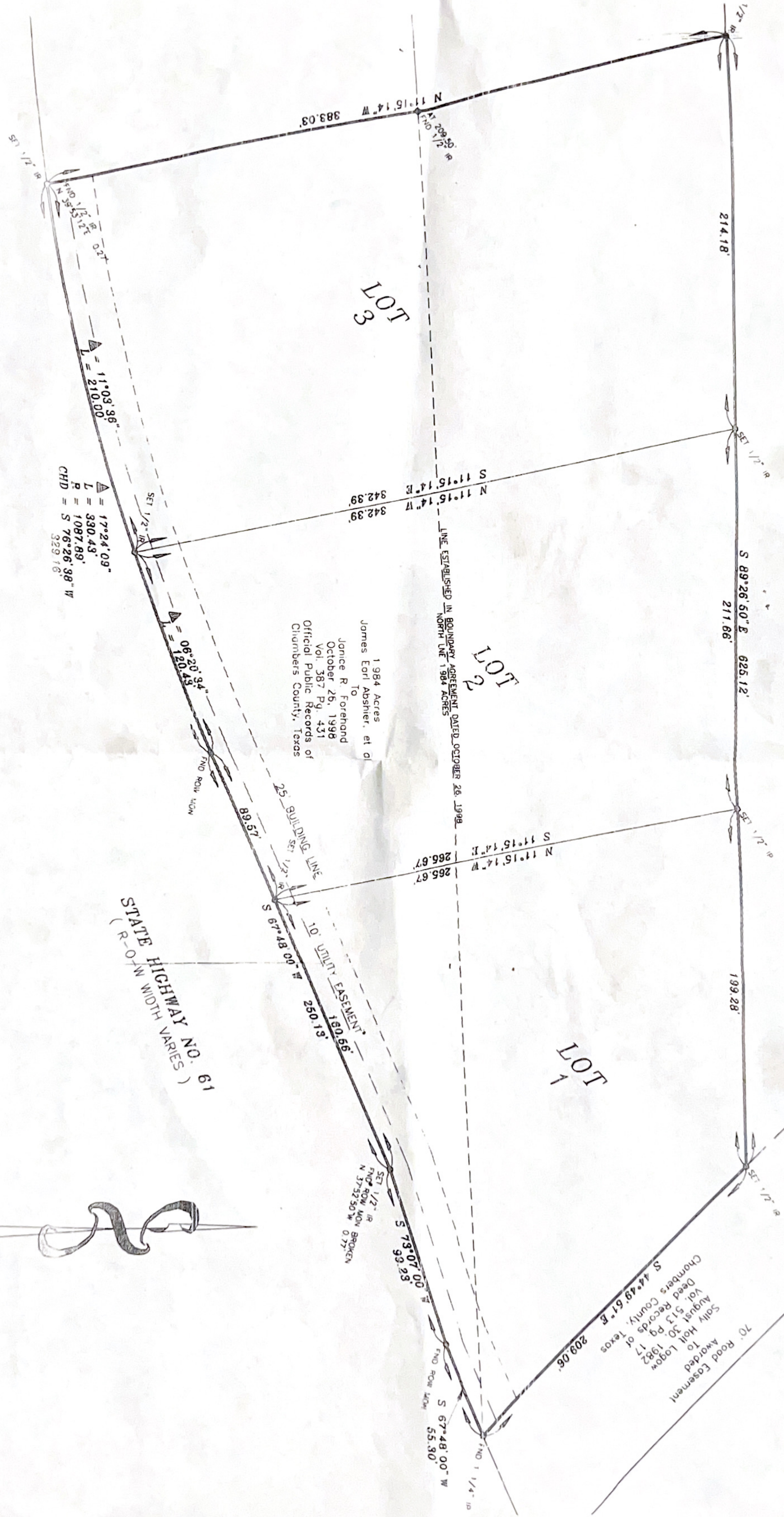


Cinda Sue Holt Miller
 To
 James R. Forehand
 September 15, 1998
 Vol. 382 Pg. 510
 Official Public Records of
 Chambers County, Texas

Residue of 71.2514 Ac
 To
 James R. Forehand
 September 15, 1998
 Vol. 382 Pg. 510
 Official Public Records of
 Chambers County, Te



$\Delta = 17^{\circ}24'09''$
 $L = 330.43'$
 $R = 1087.89'$
 $CHD = S 76^{\circ}26'38'' W$
 $329.16'$

1.984 Acres
 To
 James Earl Abshier, et al
 To
 Janice R. Forehand
 October 26, 1998
 Vol. 387 Pg. 431
 Official Public Records of
 Chambers County, Texas

STATE HIGHWAY NO. 61
 (R-O-W WIDTH VARIES)

70' Road Easement
 Awarded
 To
 Solly Holt Logow
 August 30, 1982
 Vol. 513 Pg. 17
 Chambers County, Texas
 $S 44^{\circ}49'61'' E$
 209.06'

J. T. WHITE LEAGUE