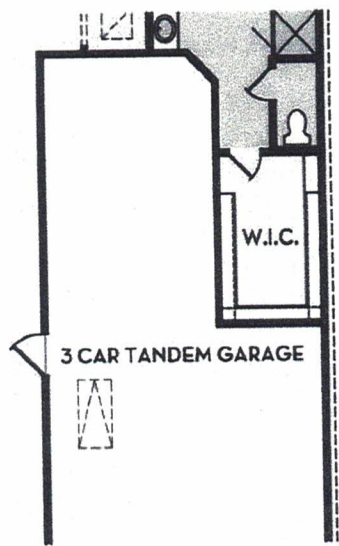
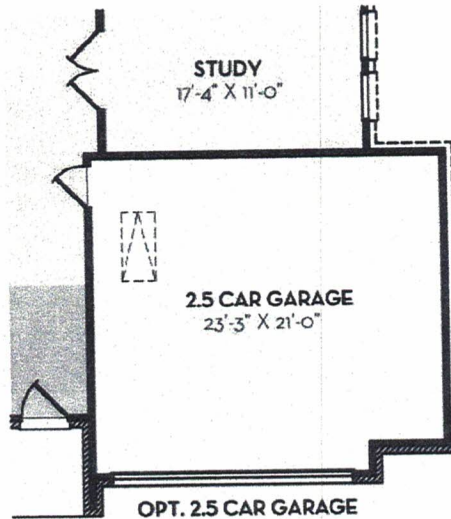


CASTLE ROCK COMMUNITIES

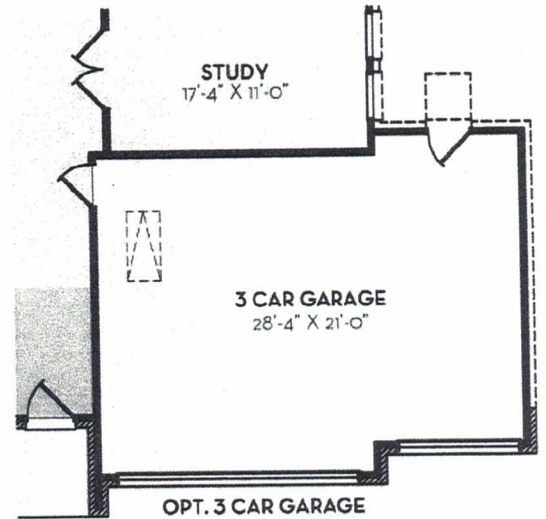
HEMINGWAY
2099 SQ FT



OPT. TANDEM GARAGE



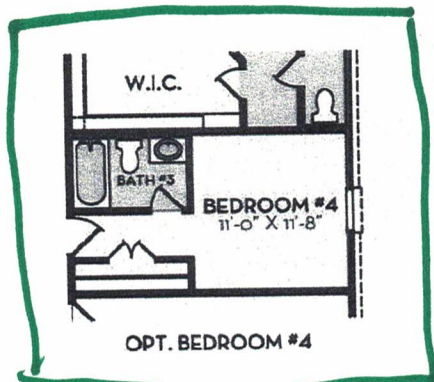
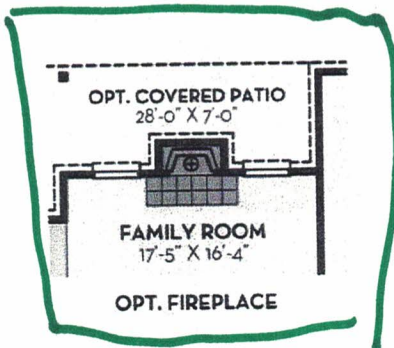
OPT. 2.5 CAR GARAGE



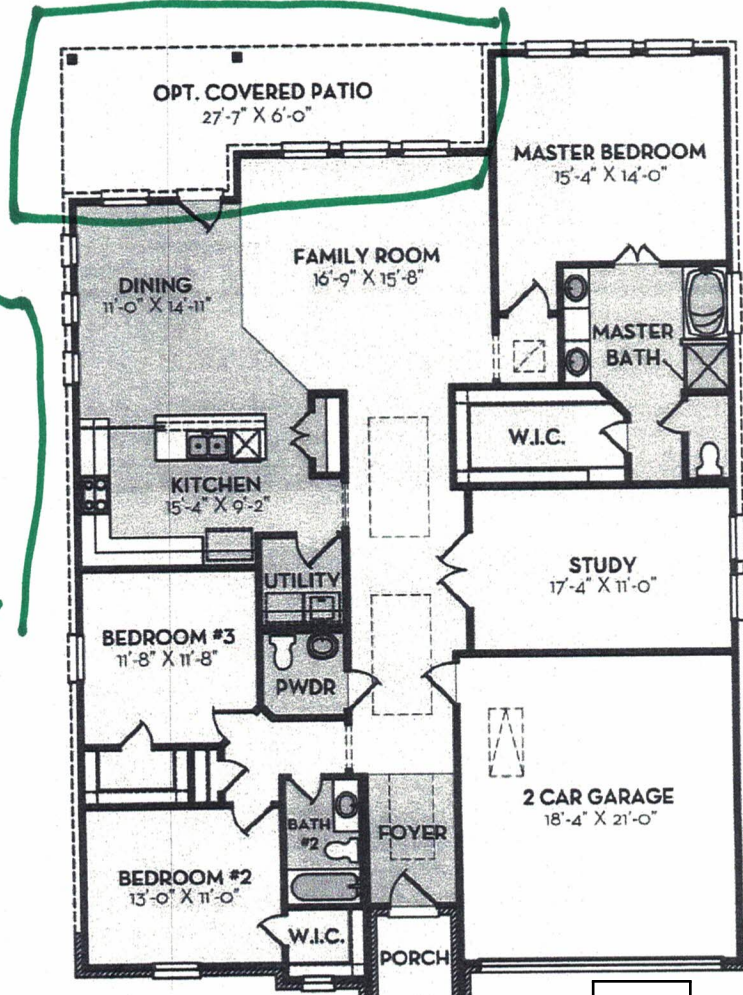
OPT. 3 CAR GARAGE



OPT. MASTER SUPER SHOWER




OPT. BEDROOM #4



FIRST FLOOR


07/12/19
9:37 PM CDT
dotloop verified


07/13/19
2:38 PM CDT
dotloop verified

1/19

COMMUNITY BUILDER WITH A ROCK SOLID FOUNDATION

C-ROCK.COM

Elevations are artist renderings and some minor changes may occur after the rendering has been produced. See Sales Consultant for current elevations. Square footage is approximate and may vary per elevation. The designs, as originally designed and prior to any changes you make, are estimated to yield approximately the number of square feet shown. All dimensions are approximate. Square footage may vary based on as-built dimensions, configurations, plan options and/or method of calculation.