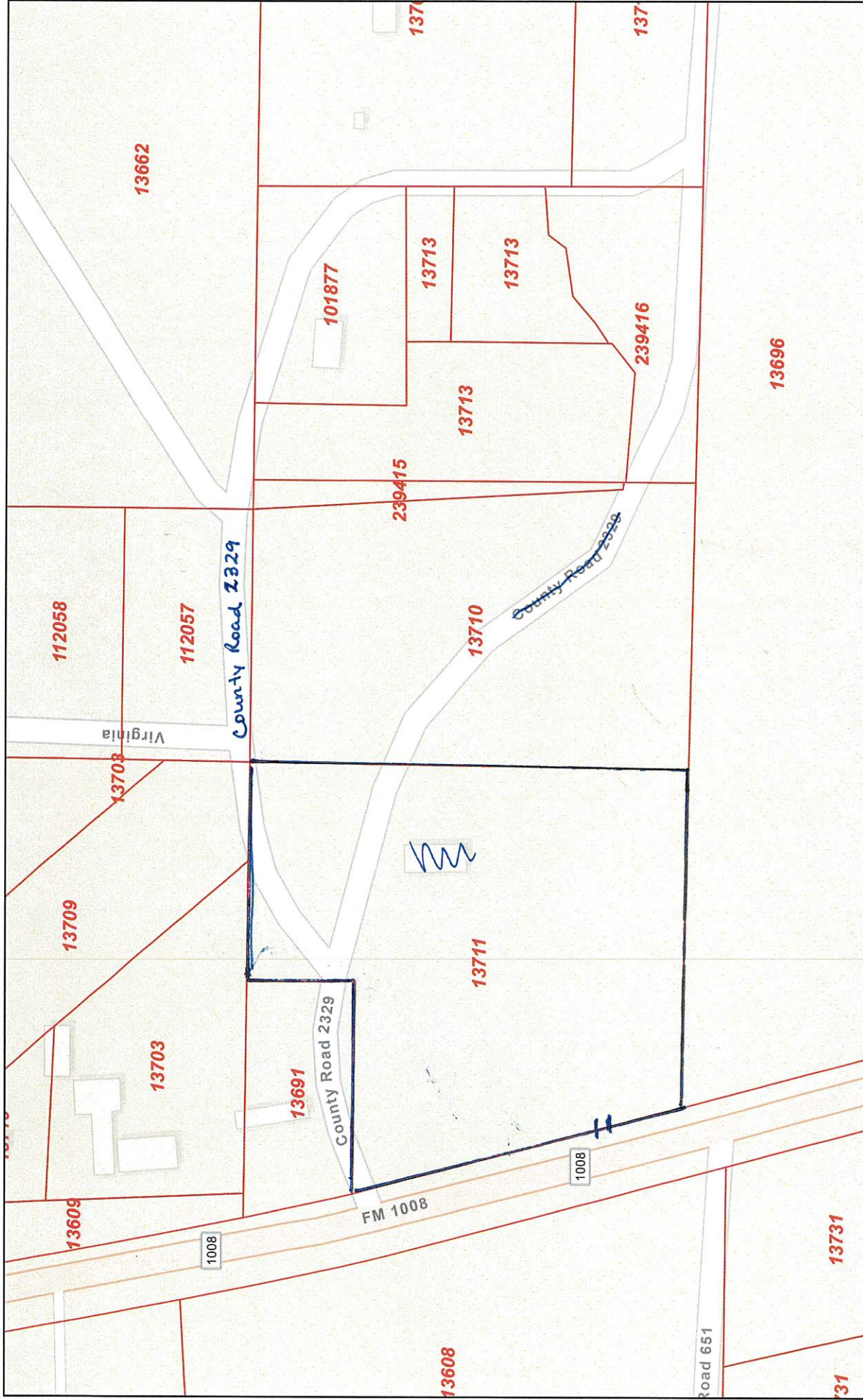


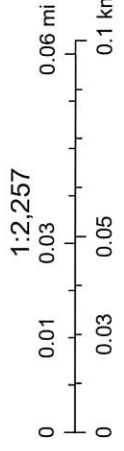
# Liberty CAD Web Map



5/10/2022, 5:54:05 PM

Parcels

Abstracts



Sources: Esri, HERE, Garmin, FAO, NOAA, USGS, © OpenStreetMap contributors, and the GIS User Community

Liberty County Appraisal District, BIS Consulting - www.bisconsulting.com  
Disclaimer: This product is for informational purposes only and has not been prepared for or be suitable for legal, engineering, or surveying purposes. It does not represent an on-the-ground survey and represents only the approximate relative location of boundaries.

