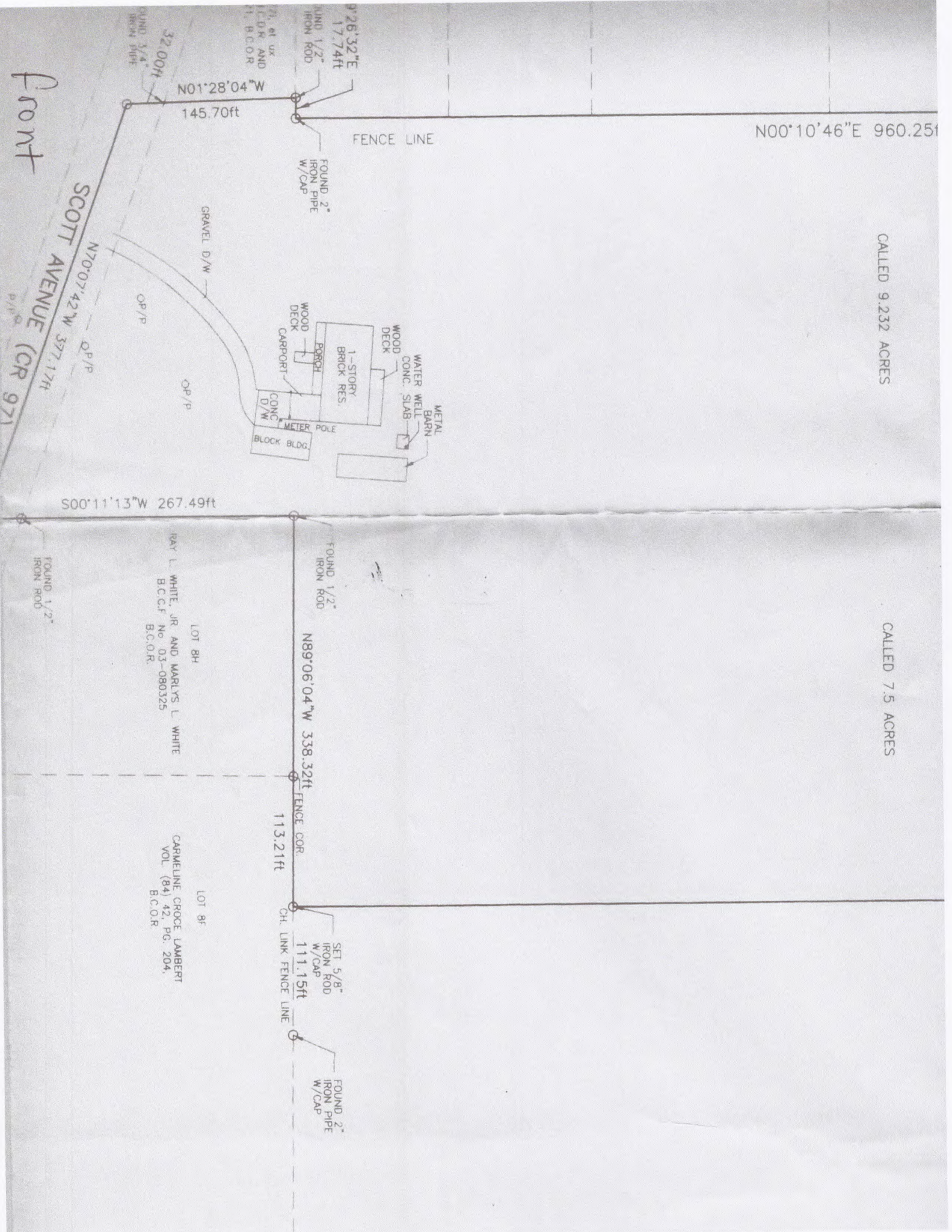
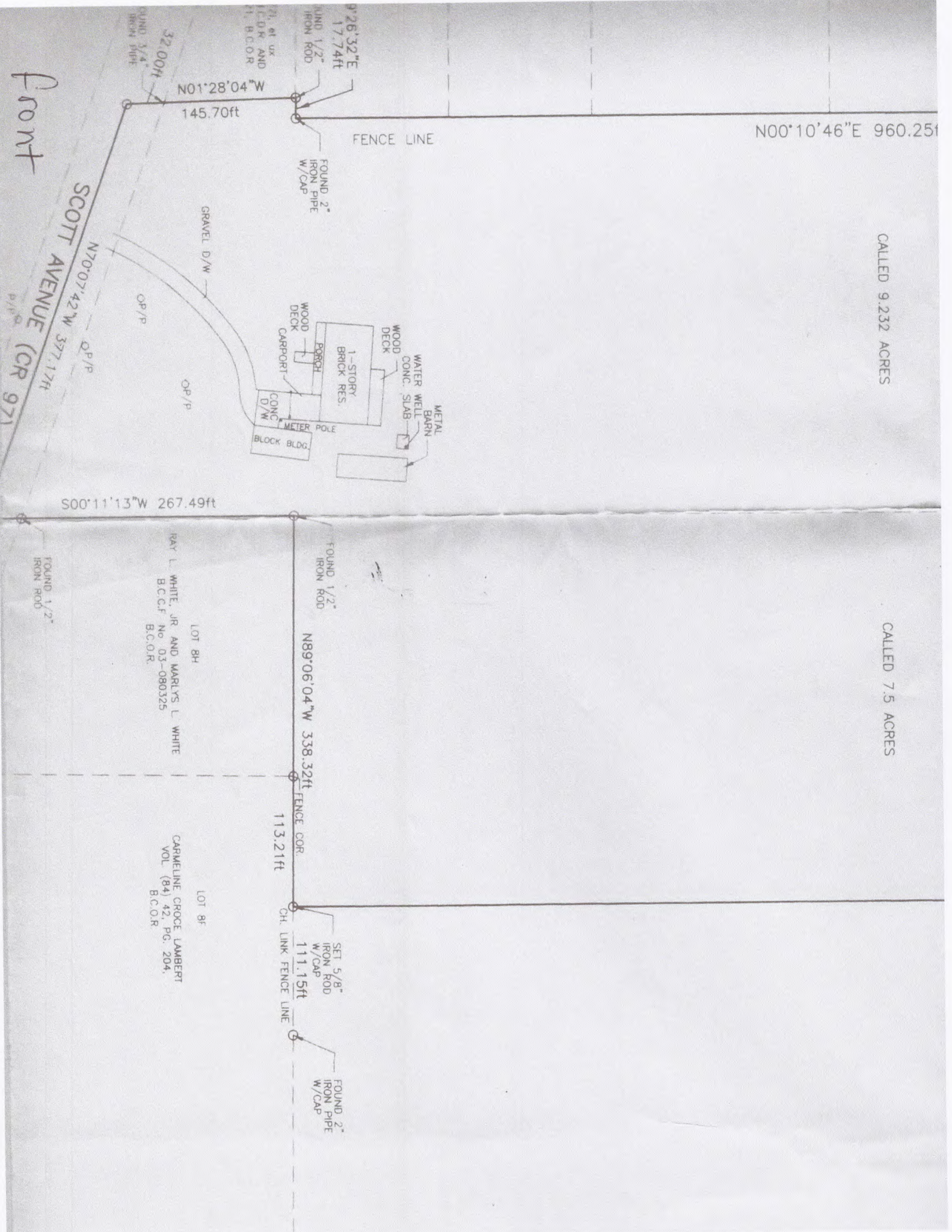


Front

SCOTT AVENUE (CR 97)

CALLED 9.232 ACRES

CALLED 7.5 ACRES



14.2 ACRES

NATURAL GAS LINE 1 (WIDTH UNDEF.)  
VOL. 998, PG. 214, B.C.D.R.

500'16"11"W 1598.45ft

Middle

OLD FENCE LINE

FOUND 2" IRON PIPE

OLD FENCE LINE

MELVIN J. UNDERWOOD  
VOL. 934, PG. 255,  
B.C.D.R.

LOT 25C1

M. J. CAMAZZOLA  
VOL. 1246, PG. 860,  
B.C.D.R.

LOT 25E1

THOMAS G. COZART, et ux  
VOL. 1258, PG. 604,  
B.C.D.R.

LOT 28A

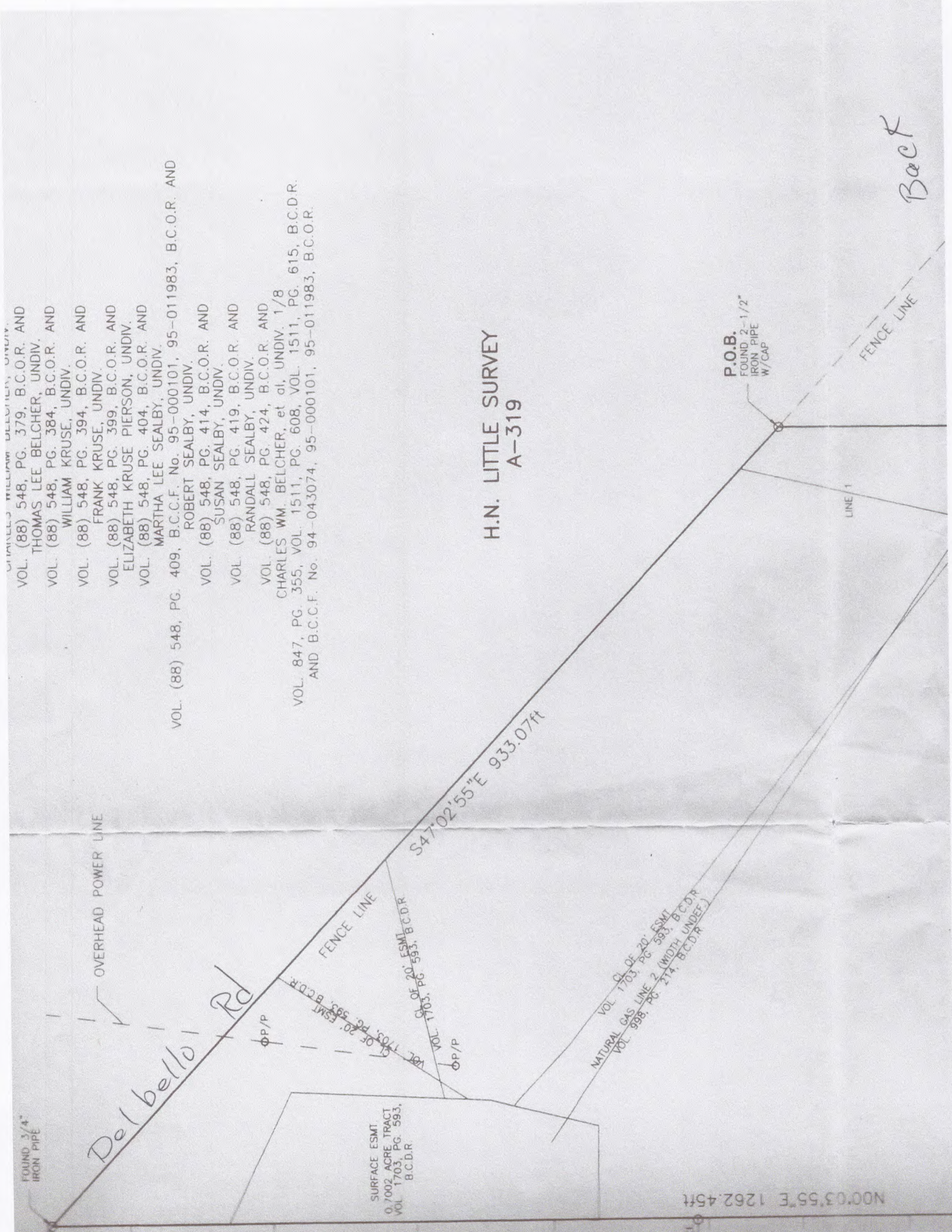
JEANNETTE AND GARY NEW  
B.C.C.F. No. 97-011371  
B.C.O.R.

LOT 28AJ

SAM ROSSI, JR.  
C.C.F. No. 97-029277, B.C.O.R. AND  
VOL. 1181, PG. 276, B.C.D.R.

LOT 28A2A

SAM ROSSI, JR.  
C.C.F. No. 97-029277, B.C.O.R. AND  
VOL. 1181, PG. 276, B.C.D.R.



- VOL. (88) 548, PG. 379, B.C.O.R. AND THOMAS LEE BELCHER, UNDIV.
- VOL. (88) 548, PG. 384, B.C.O.R. AND WILLIAM KRUSE, UNDIV.
- VOL. (88) 548, PG. 394, B.C.O.R. AND FRANK KRUSE, UNDIV.
- VOL. (88) 548, PG. 399, B.C.O.R. AND ELIZABETH KRUSE PIERSON, UNDIV.
- VOL. (88) 548, PG. 404, B.C.O.R. AND MARTHA LEE SEALBY, UNDIV.
- VOL. (88) 548, PG. 409, B.C.C.F. No. 95-000101, 95-011983, B.C.O.R. AND ROBERT SEALBY, UNDIV.
- VOL. (88) 548, PG. 414, B.C.O.R. AND SUSAN SEALBY, UNDIV.
- VOL. (88) 548, PG. 419, B.C.O.R. AND RANDALL SEALBY, UNDIV.
- VOL. (88) 548, PG. 424, B.C.O.R. AND CHARLES WM BELCHER, et al, UNDIV. 1/8
- VOL. 847, PG. 355, VOL. 1511, PG. 608, VOL. 1511, PG. 615, B.C.D.R. AND B.C.C.F. No. 94-043074, 95-000101, 95-011983, B.C.O.R.

H.N. LITTLE SURVEY  
A-319

Back

FOUND 3/4\"

OVERHEAD POWER LINE

Del bello Rd

FENCE LINE

SURFACE ESMT  
0.7002 ACRE TRACT  
VOL. 1703, PG. 593,  
B.C.D.R.

S47°02'55"E 933.07ft

NATURAL GAS LINE 2 (WIDTH UNDEF.)  
VOL. 998, PG. 274, B.C.D.R.

P.O.B.  
FOUND 2-1/2\"

LINE 1

FENCE LINE

N00°03'55"E 1262.45ft